



123 NE Beacon Dr.
Grants Pass, OR 97526

GLAZED OR OPAQUE WOOD DOOR W / SIDELITES AND TRANSOM IN SWING / OUT SWING "NON-IMPACT"

GENERAL NOTES

1. This product has been evaluated and is in compliance with the 2010 Florida Building Code (FBC) structural requirements excluding the "High Velocity Hurricane Zone" (HVHZ).
2. Product anchors shall be as listed and spaced as shown on details. Anchor embedment to base material shall be beyond wall dressing or stucco.
3. When used in areas requiring wind borne debris protection this product is required to be protected with an impact resistant covering that complies with Section 1609.1.2 of the FBC.
4. For 2x stud framing construction, anchoring of these units shall be the same as that shown for 2x buck masonry construction.
5. Site conditions that deviate from the details of this drawing require further engineering analysis by a licensed engineer or registered architect.

TABLE OF CONTENTS

SHEET#	DESCRIPTION
1	Test elevations, design pressures and general notes
2	Door panel details (opaque)
3	Door / Sidelite panel details (full lite)
4	Sidelite panel details (3/4 lite)
5	Transom panel details (full lite)
6	Horizontal cross sections
7	Horizontal cross sections
8	Vertical cross sections
9	Vertical cross sections
10	Buck anchoring
11	Frame anchoring - 2X buck
12	Frame anchoring - 1X buck
13	Lock details
14	Components
15	Bill of materials, components and glazing detail



DOOR PANEL TYPE	OVERALL FRAME DIMENSION	DOOR MAX. D.L.O. DIMENSION	MAX. D.L.O. DIMENSION	GLASS TYPE	DESIGN PRESSURE (PSF)	
					POSITIVE	NEGATIVE
OPAQUE	112.5" x 135.87"	N/A	110.0" x 33.5"	G1	+47.0	-50.0
FULL LITE	112.5" x 135.87"	27.00" x 82.25"	110.0" x 33.5"		+30.0	-35.0

Documents Prepared By:

RW BUILDING CONSULTANTS, INC.
P.O. Box 230 Vairico FL 33595
Phone No.: 813.659.9197
Florida Board of Professional Engineers
Certificate Of Authorization No. 9813
10/25/12
Lyndon F. Schmidt, P.E. No. 43409

PRODUCT: ROGUE VALLEY DOOR

PART OR ASSEMBLY:
TYPICAL ELEVATIONS, DESIGN PRESSURES & GENERAL NOTES

NO.	DATE	BY	REVISIONS
1	10/25/12	LFS	UPDATE TO 2010 FBC

DATE: 10/06/09

SCALE: N.T.S.

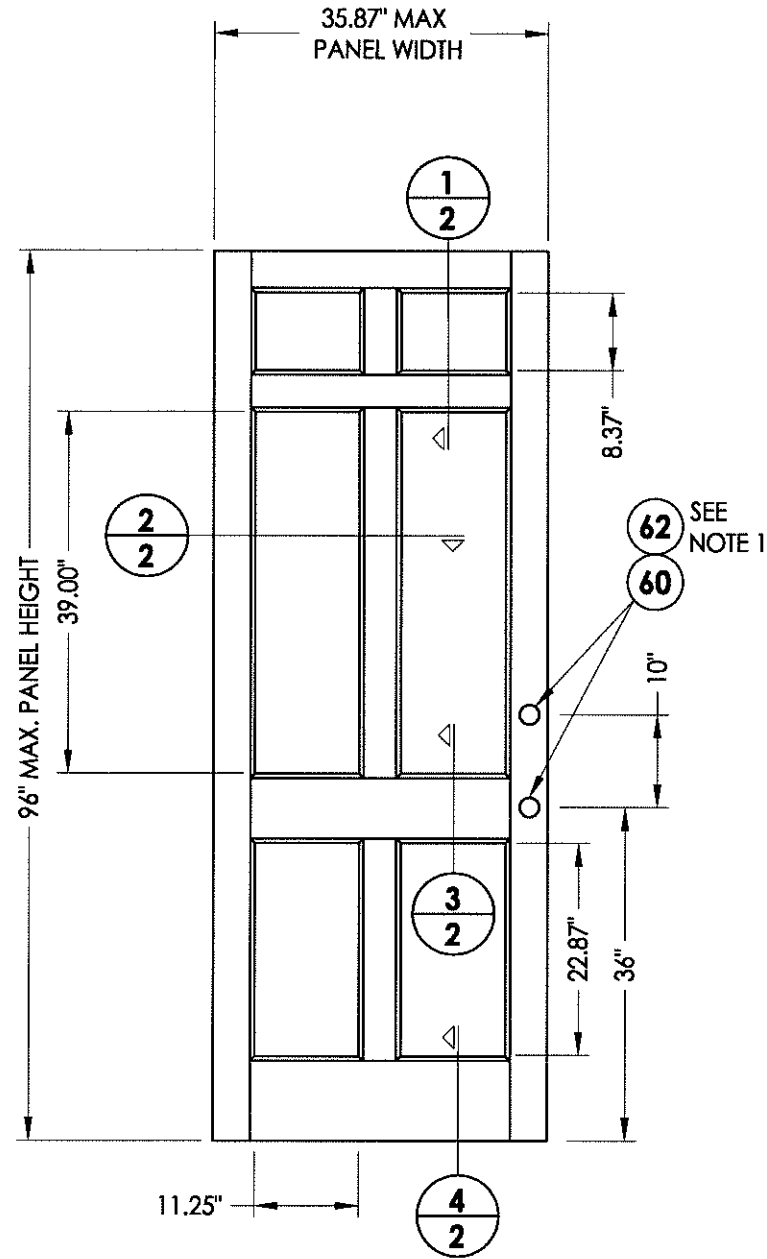
DWG. BY: JK

CHK. BY: LFS

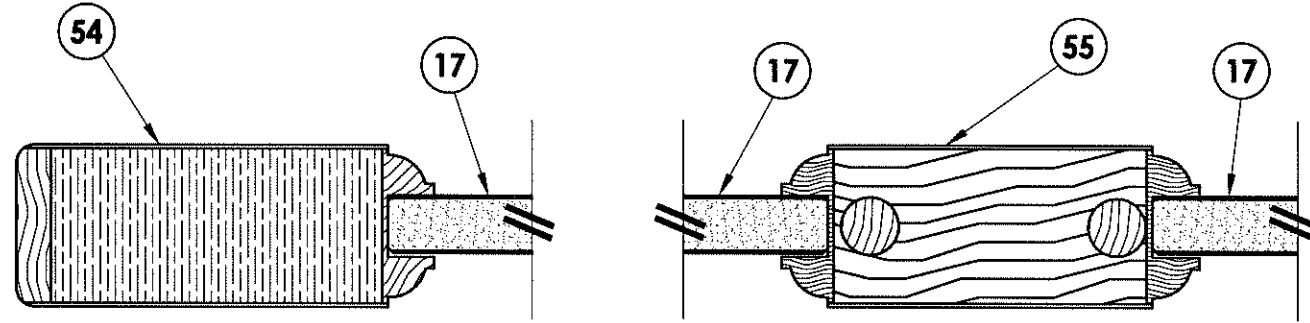
DRAWING NO.:
FL-13137.5

SHEET 1 OF 15

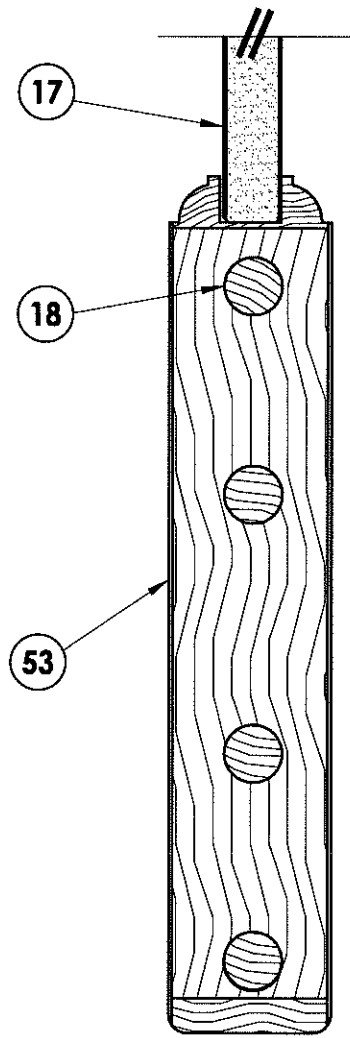
NOTE:
 1. 3 point lock (item 62) or latch and deadbolt (item 60) are approved for opaque door.



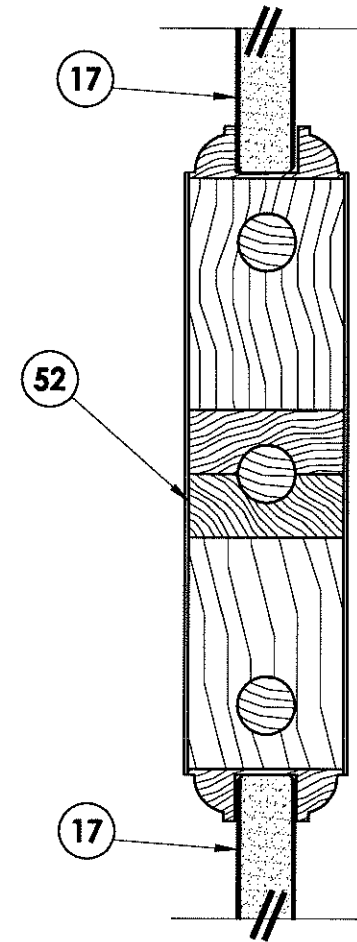
50 DOOR PANEL
 Opaque 36"



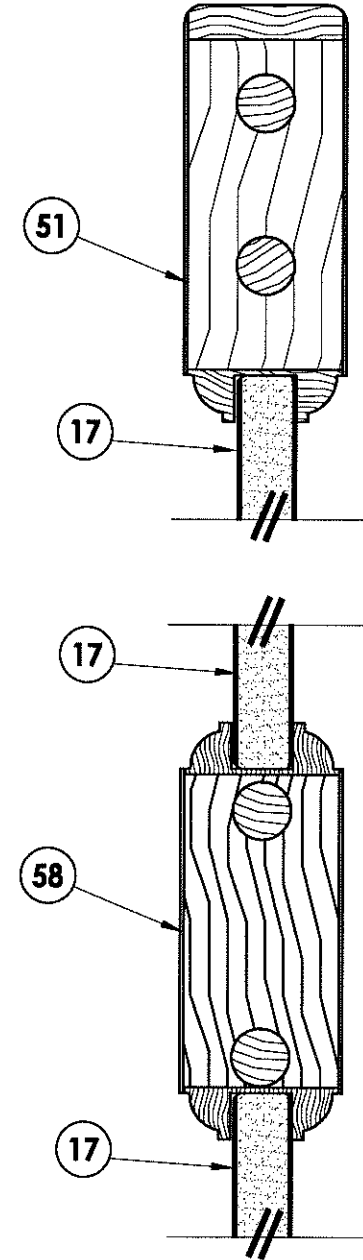
2 HORIZONTAL CROSS SECTION



4 VERTICAL CROSS SECTION



3 VERTICAL CROSS SECTION



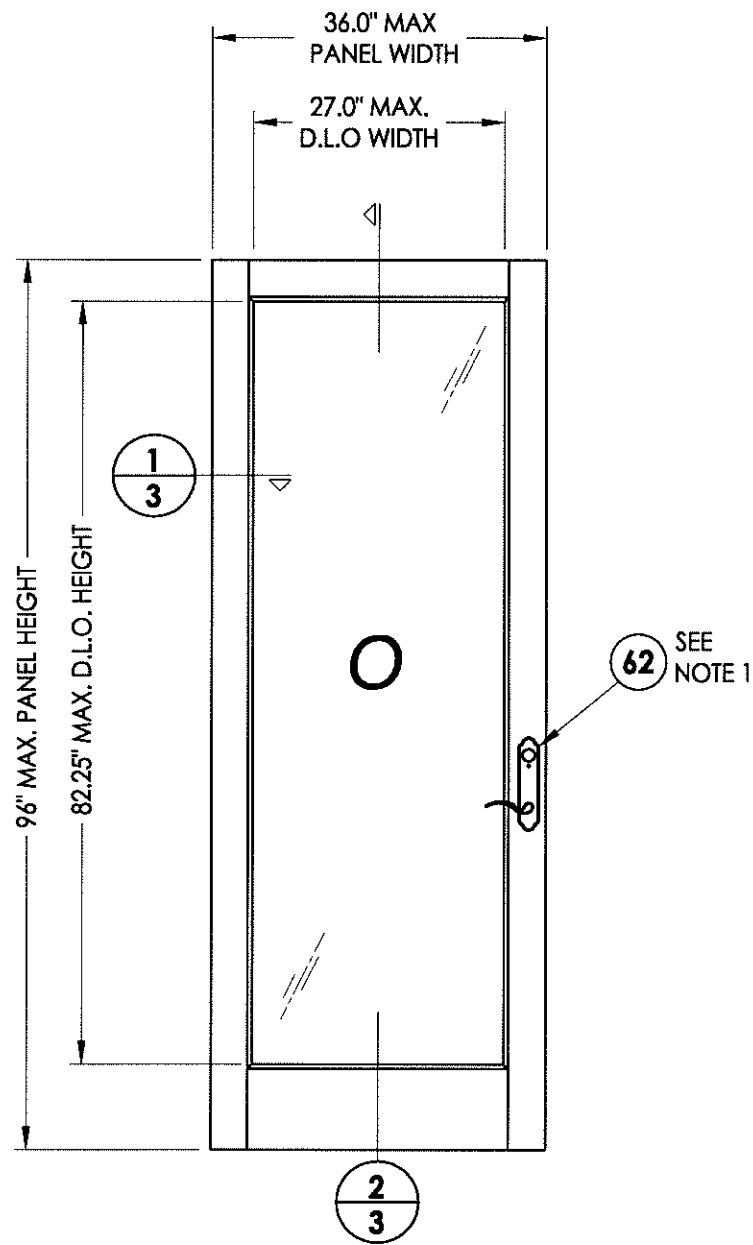
1 VERTICAL CROSS SECTION

Documents Prepared By:
RW BUILDING CONSULTANTS, INC.
 P.O. Box 230 Valrico FL 33595
 Phone No.: 813.659.9197
 Florida Board of Professional Engineers
 Certificate Of Authorization No. 9813
LFS *6.05.12*
 Lyndon F. Schmidt, P.E. No. 43409

PRODUCT: ROGUE VALLEY DOOR
 PART OR ASSEMBLY: DOOR PANEL DETAILS (OPAQUE)

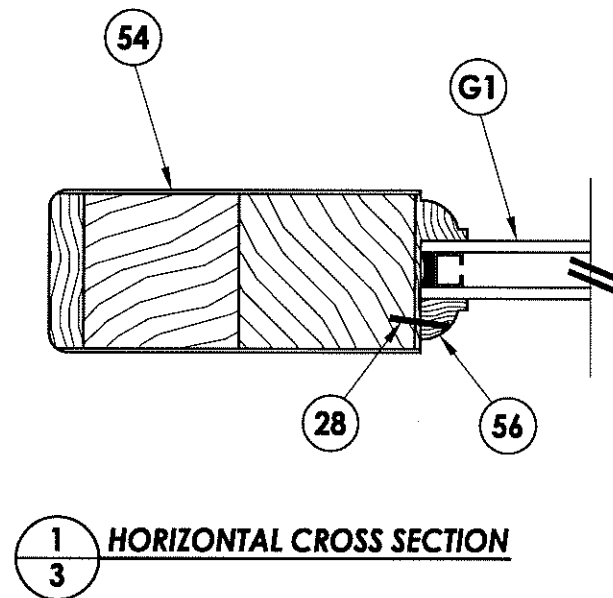
NO.	DATE	BY
1	10/25/12	LFS
UPDATE TO 2010 FBC		

DATE: 10/06/09
 SCALE: N.T.S.
 DWG. BY: JK
 CHK. BY: LFS
 DRAWING NO.: FL-13137.5
 SHEET 2 OF 15

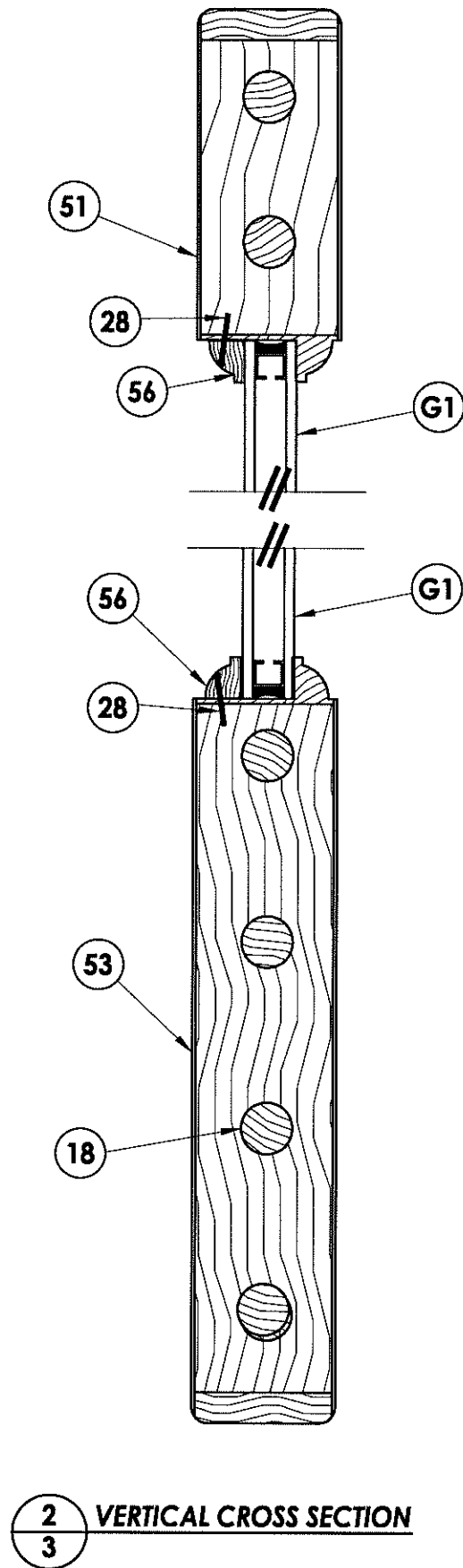


41 DOOR/SIDELITE PANEL
Full lite

NOTE:
1. 3 point lock (item 62) required for full lite door panel.

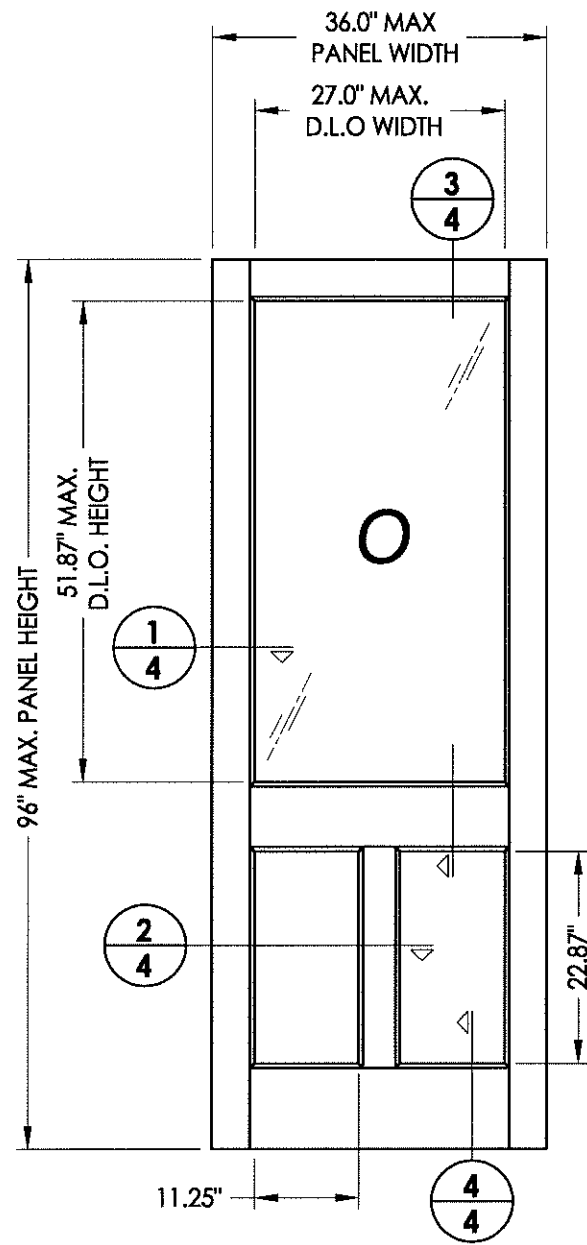


1/3 HORIZONTAL CROSS SECTION

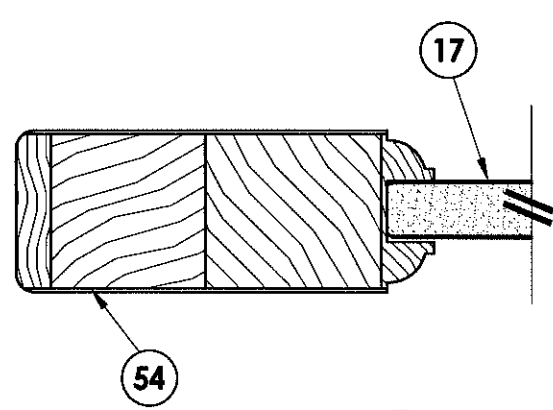


2/3 VERTICAL CROSS SECTION

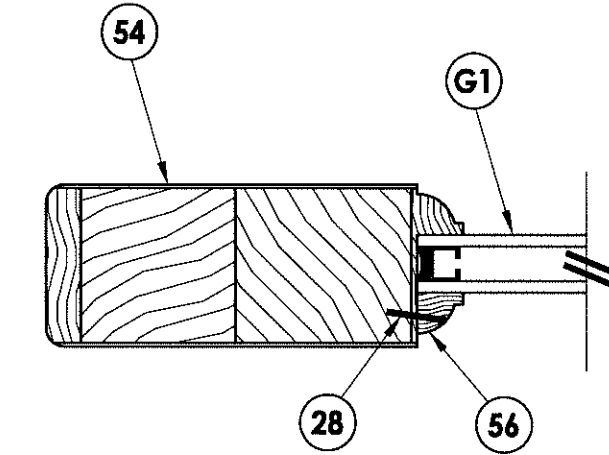
Documents Prepared By: RW BUILDING CONSULTANTS, INC. P.O. Box 230 Vairico FL 33595 Phone No.: 813.659.9197 Florida Board of Professional Engineers Certificate Of Authorization No. 9813 <i>RF</i> 10.25-12 Lyndon F. Schmidt, P.E. No. 43409	
PRODUCT: ROGUE VALLEY DOOR	PART OR ASSEMBLY: DOOR / SIDELITE PANEL DETAILS (FULL LITE)
DATE: 10/06/09	SCALE: N.T.S.
DWG. BY: JK	CHK. BY: LFS
DRAWING NO.: FL-13137.5	REVISIONS
SHEET 3 OF 15	NO. DATE BY
1 10/25/12 UPDATE TO 2010 FBC	LFS
2	BY



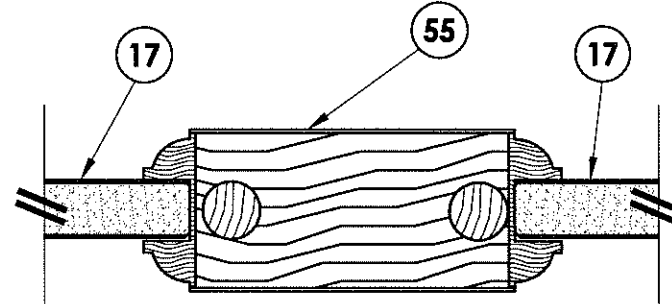
40 SIDELITE PANEL
3/4 lite



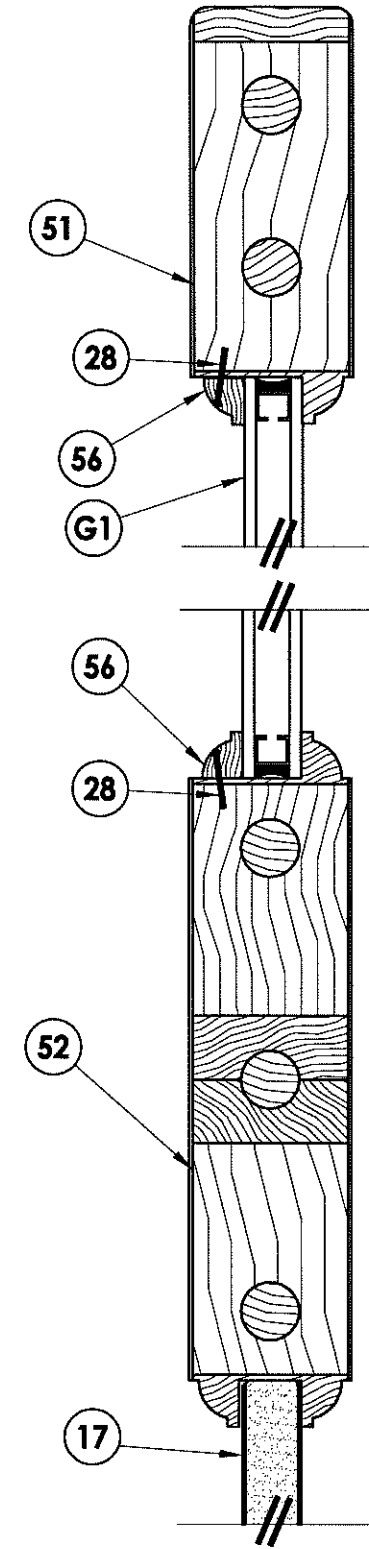
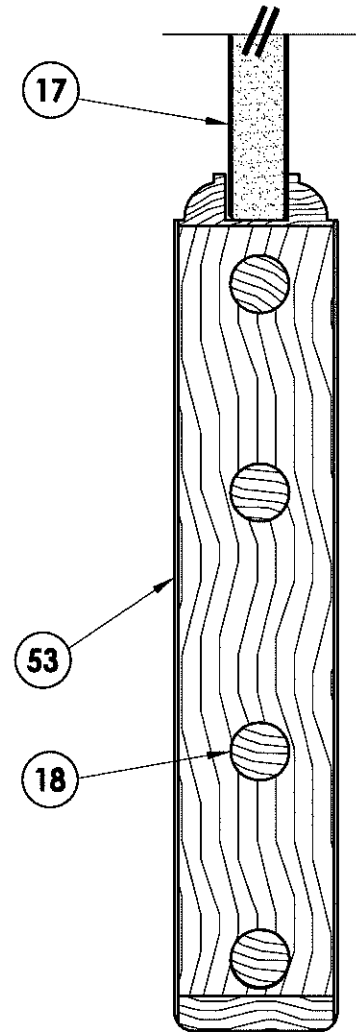
2 HORIZONTAL CROSS SECTION



1 HORIZONTAL CROSS SECTION



4 VERTICAL CROSS SECTION



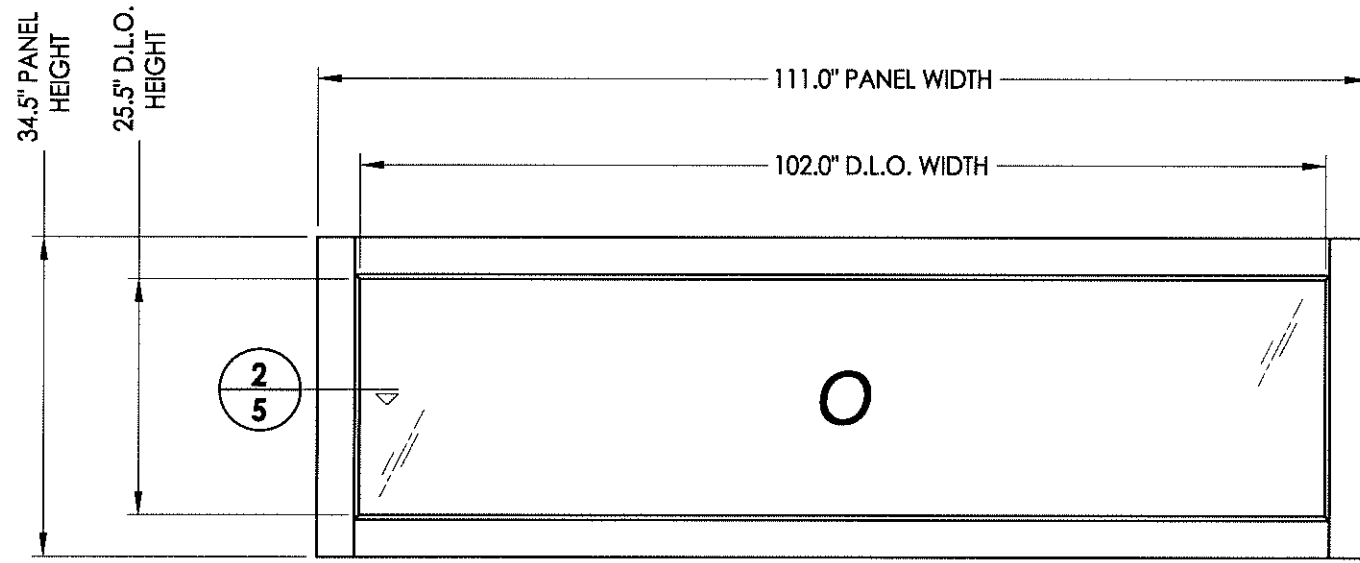
3 VERTICAL CROSS SECTION

Documents Prepared By:
RW BUILDING CONSULTANTS, INC.
 P.O. Box 230 Valrico FL 33595
 Phone No.: 813.659.9197
 Florida Board of Professional Engineers
 Certificate Of Authorization No. 9813
LFS Peres-re
 Lyndon F. Schmidt, P.E. No. 43409

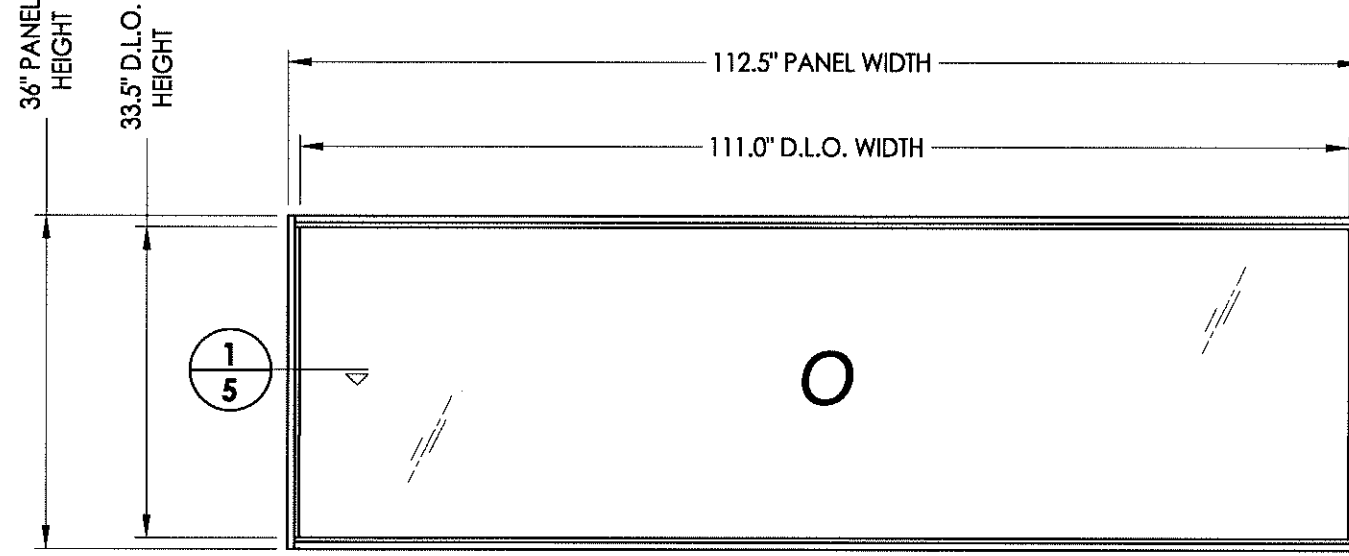
PRODUCT: ROGUE VALLEY DOOR
 PART OR ASSEMBLY: SIDELITE PANEL DETAILS
 (3/4 LITE)

NO.	DATE	REVISIONS
1	10/25/12	UPDATE TO 2010 FBC
LFS		BY

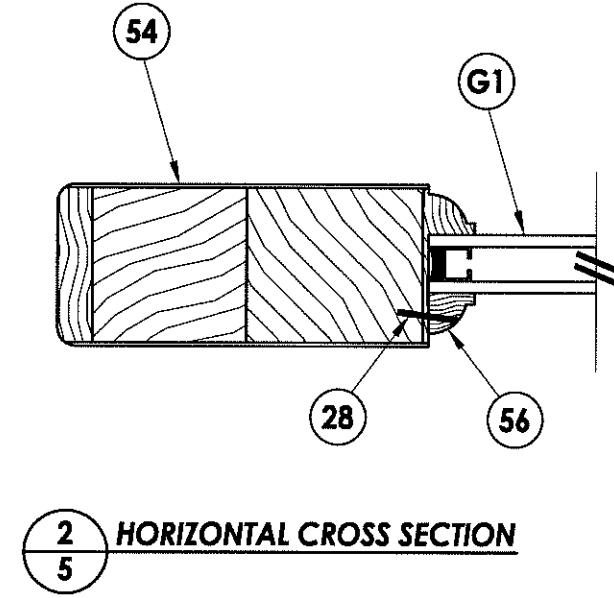
DATE: 10/06/09
 SCALE: N.T.S.
 DWG. BY: JK
 CHK. BY: LFS
 DRAWING NO.: FL-13137.5
 SHEET 4 OF 15



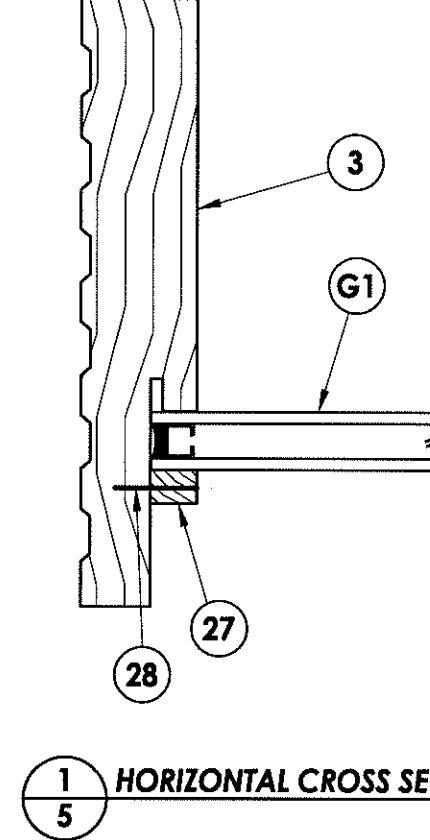
36 TRANSOM PANEL



36 TRANSOM PANEL
Direct to jamb



2 HORIZONTAL CROSS SECTION



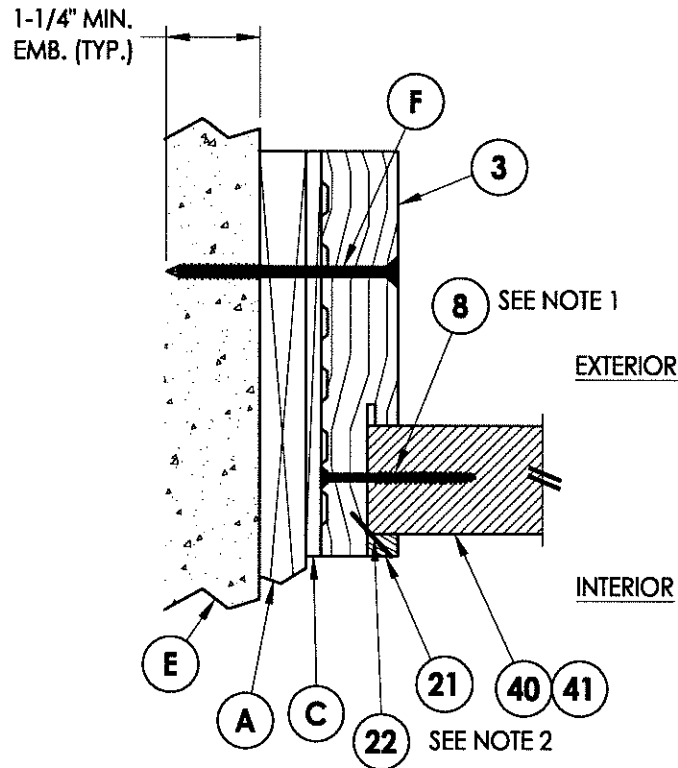
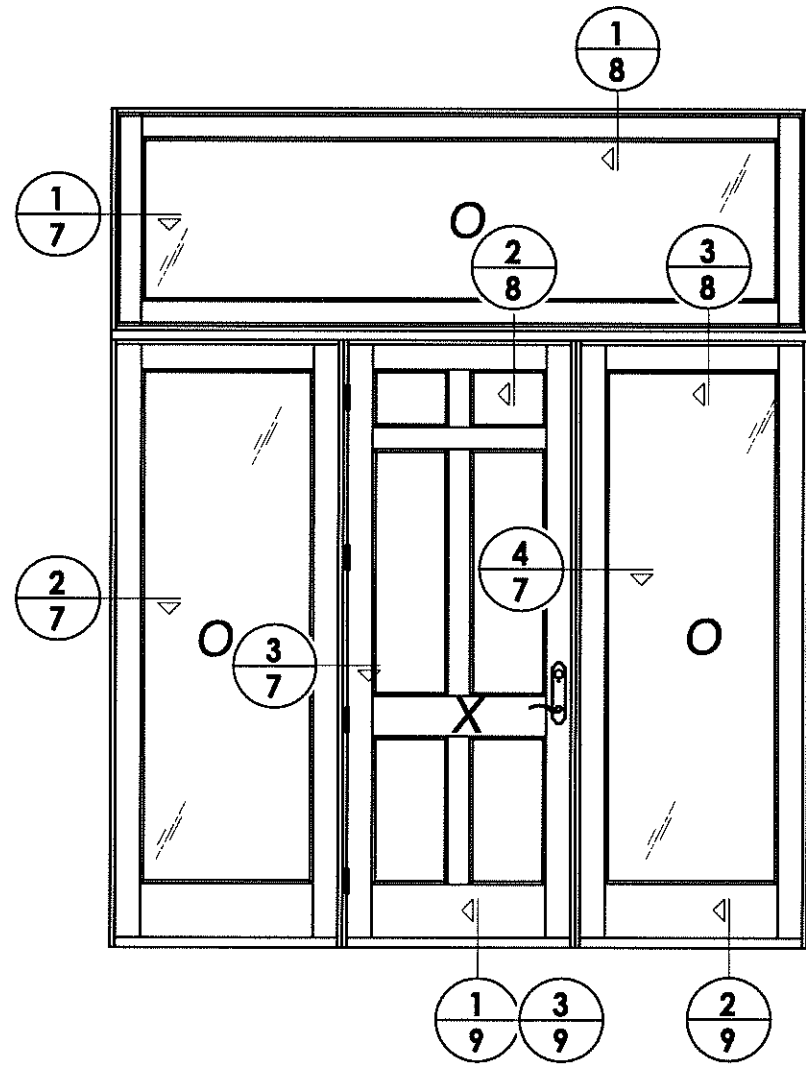
1 HORIZONTAL CROSS SECTION

DATE: 10/06/09		REVISIONS	
SCALE: N.T.S.			
DWG. BY: JK			
CHK. BY: LFS			
DRAWING NO.: FL-13137.5			
SHEET 5 OF 15			
PRODUCT: ROGUE VALLEY DOOR PART OR ASSEMBLY: TRANSOM PANEL DETAILS (FULL LITE)		NO. DATE BY 1 10/25/12 UPDATE TO 2010 FBC LFS NO. DATE BY	
Documents Prepared By: RW BUILDING CONSULTANTS, INC. P.O. Box 230 Vairico FL 33595 Phone No.: 813.659.9197 Florida Board of Professional Engineers Certificate Of Authorization No. 9813 Lyndon F. Schmidt, P.E. No. 43409			

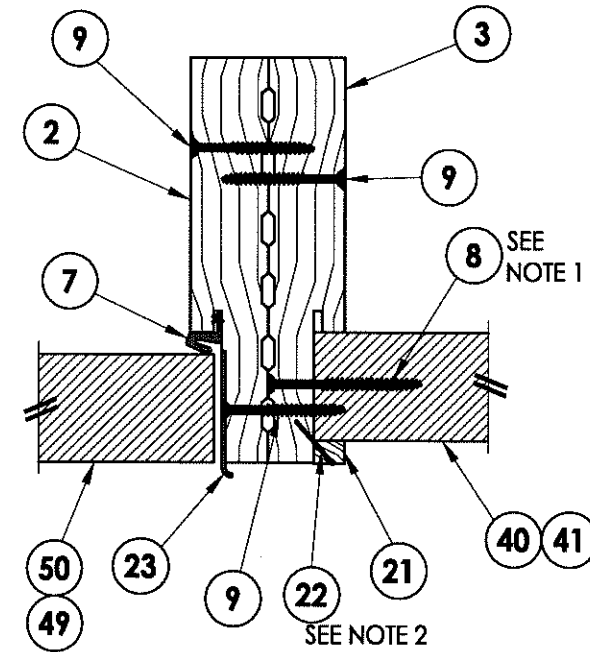
R:\VA - Projects\Project Folders\proj_1401-1500\VPF 1482\VD_RWBC Drawings\FL-13137\FL-13137.dwg, 7.5

NOTE:

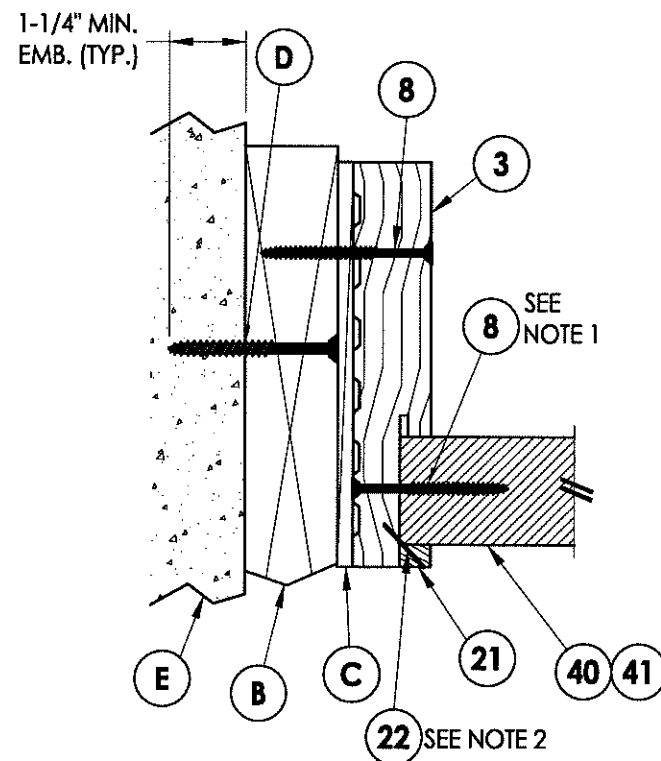
1. Attach sidelite panel to the frame with screws (#10 X 2-1/2" pfn) 2" from each end and 6" o.c.
2. Staples located 1" from each end and 8" o.c. thereafter



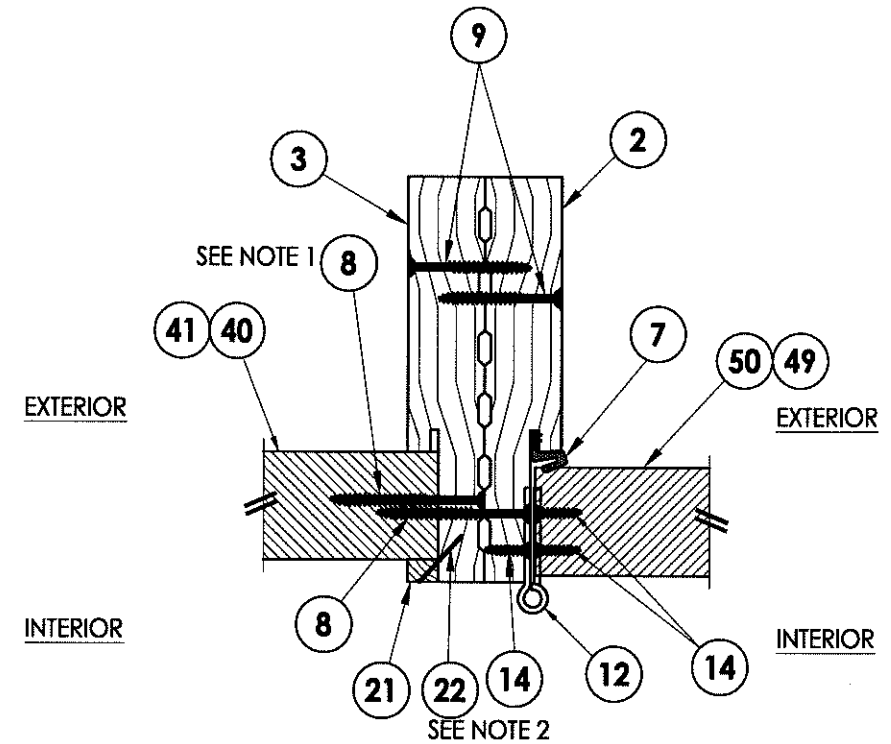
1 HORIZONTAL CROSS SECTION
7 Shown w/ 1X sub-buck



4 HORIZONTAL CROSS SECTION
7 Inswing shown - outswing also approved



2 HORIZONTAL CROSS SECTION
7 Inswing shown - outswing also approved

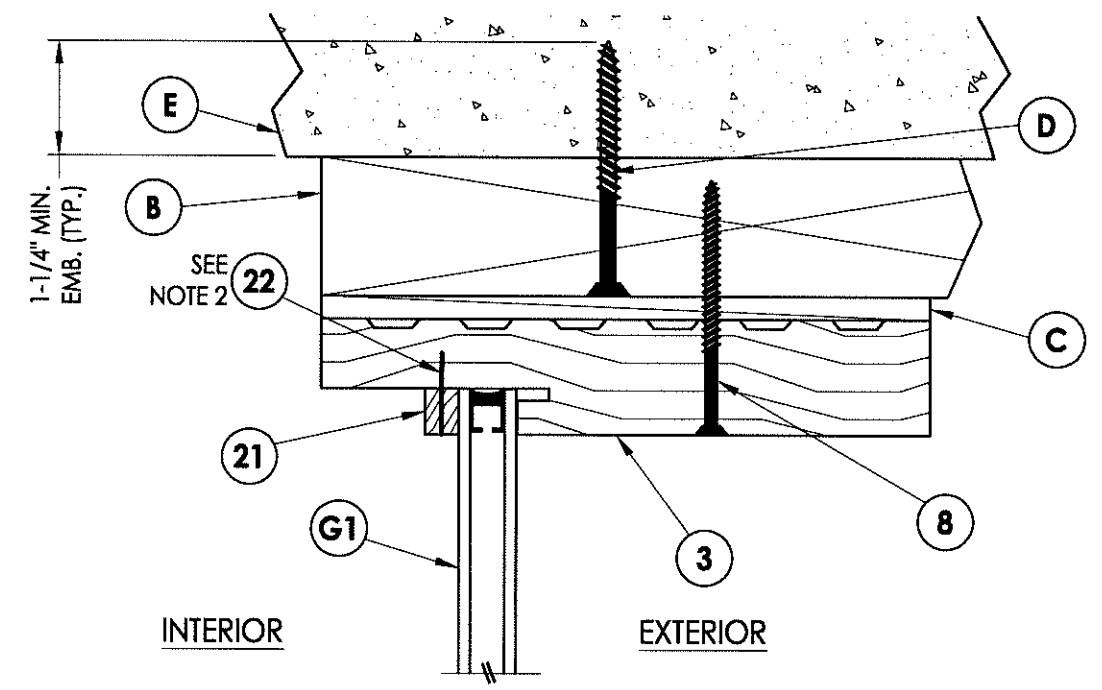


3 HORIZONTAL CROSS SECTION
7 Inswing shown - outswing also approved

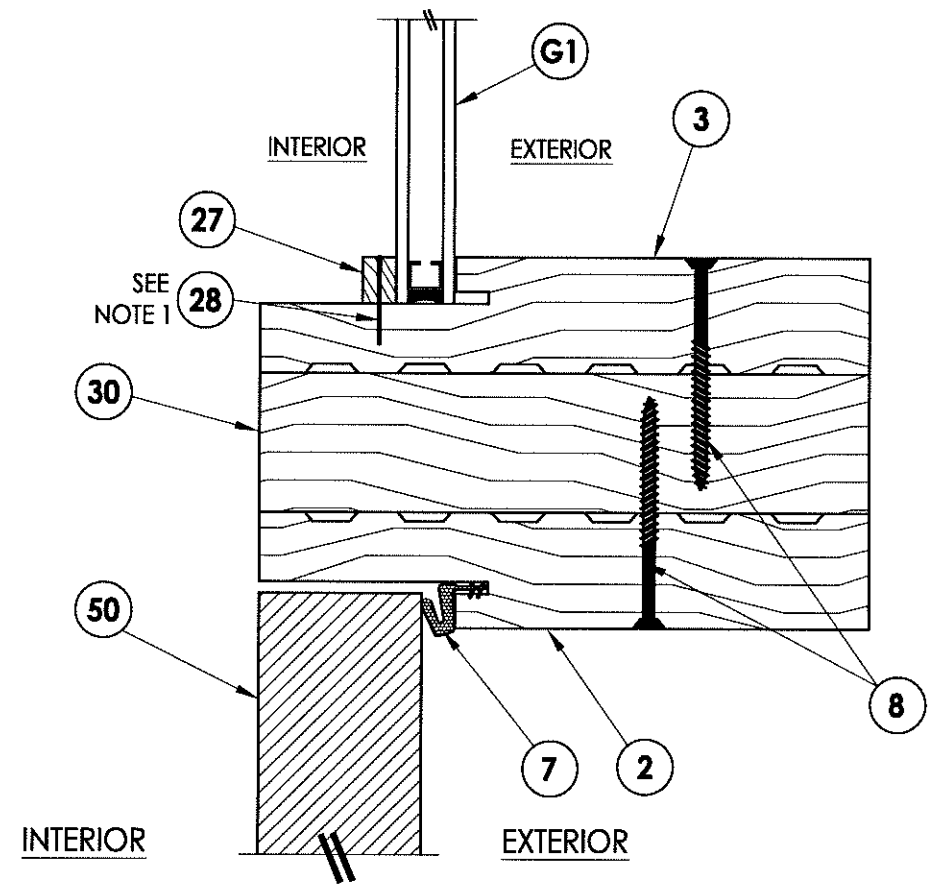
Documents Prepared By:		RW BUILDING CONSULTANTS, INC. P.O. Box 230 Valrico FL 33595 Phone No.: 813.659.9197	
PRODUCT:		ROGUE VALLEY DOOR	
PART OR ASSEMBLY:		HORIZONTAL CROSS SECTIONS	
NO.	DATE	BY	REVISIONS
1	10/25/12	LFS	UPDATE TO 2010 FBC
DATE: 10/06/09			
SCALE: N.T.S.			
DWG. BY: JK			
CHK. BY: LFS			
DRAWING NO.: FL-13137.5			
SHEET 7 OF 15			

R:\A - Projects\Project Folders\proj_1401-1500\PE_1482\ID_RWBC_Drawing\FL-13137\FI-13137.dwg, 8.5

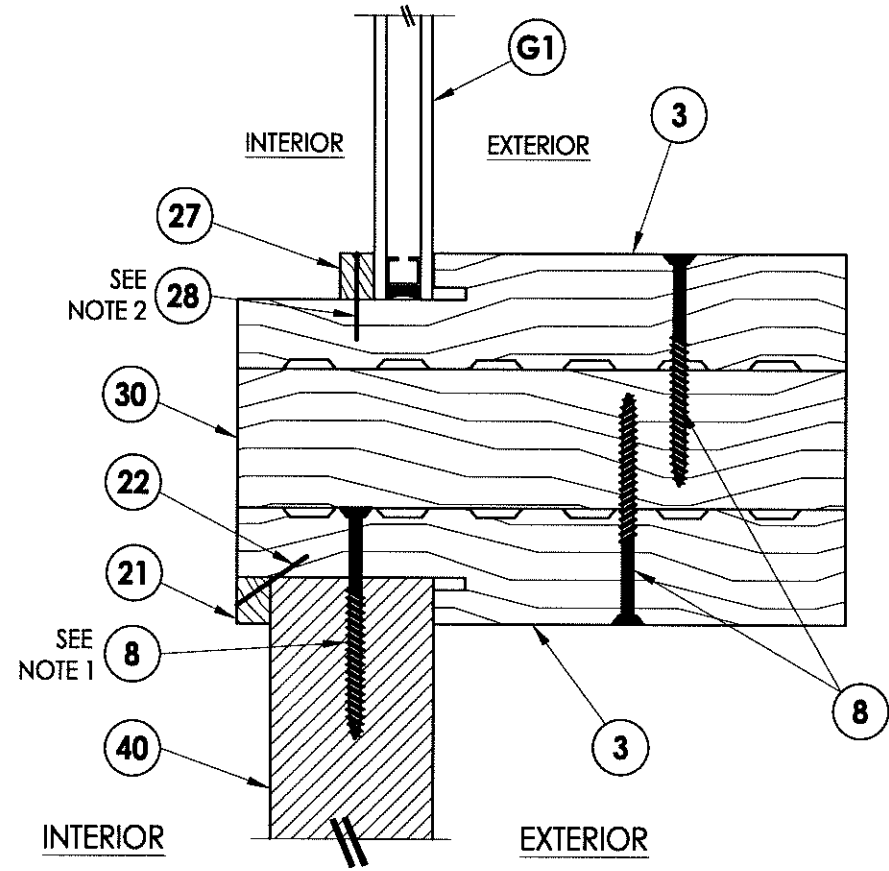
- NOTE:
1. Attach sidelite panel to the frame with screws (#10 X 2-1/2" pfh) 2" from each end and 6" o.c.
 2. Staples located 1" from each end and 8" o.c. thereafter



1
8 VERTICAL CROSS SECTION



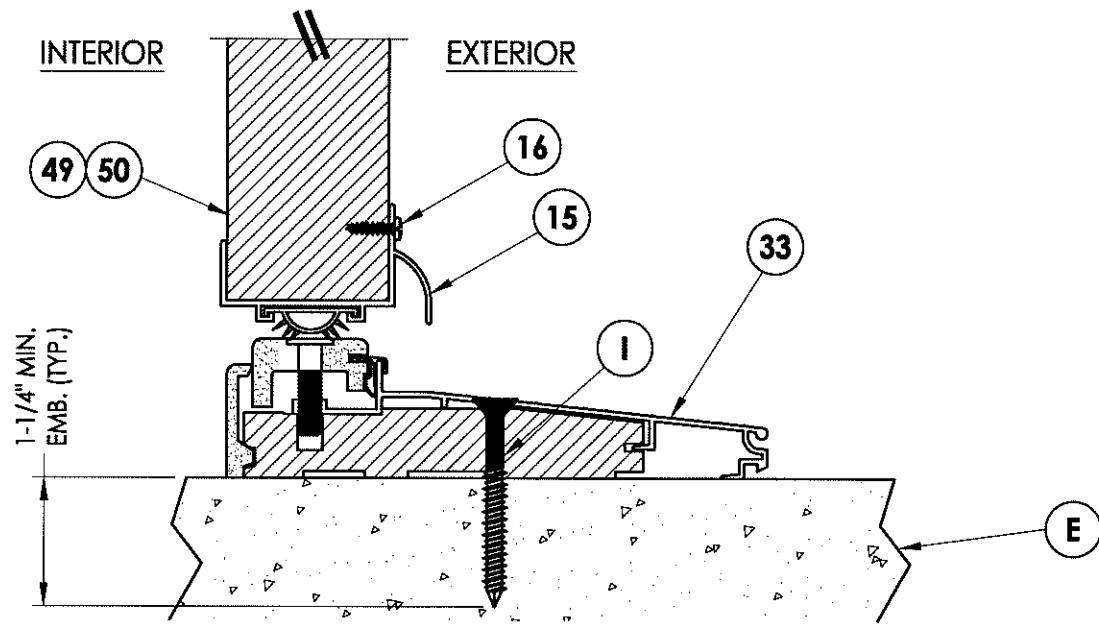
2
8 VERTICAL CROSS SECTION



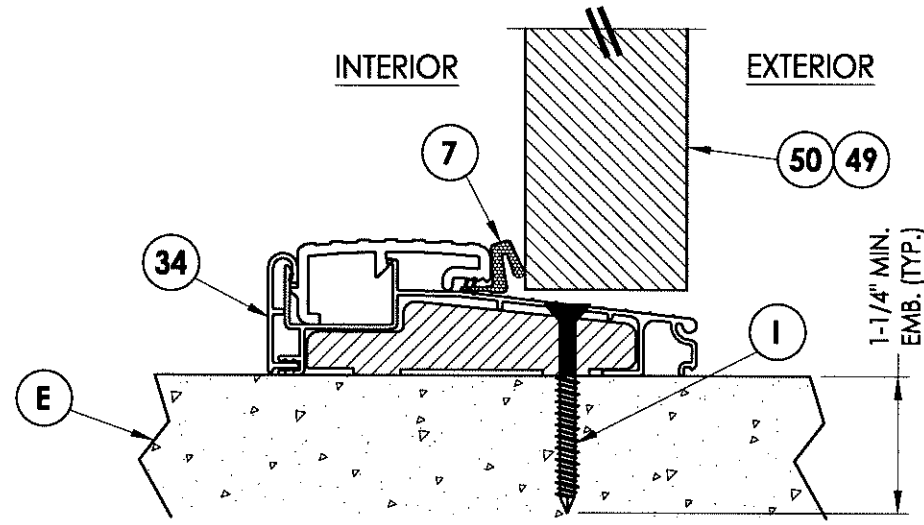
3
8 VERTICAL CROSS SECTION

Documents Prepared By:		R.W. BUILDING CONSULTANTS, INC. P.O. Box 230 Vairico FL 33595 Phone No.: 813.659.9197	
PRODUCT:		ROGUE VALLEY DOOR	
PART OR ASSEMBLY:		VERTICAL CROSS SECTIONS	
DATE:		10/06/09	
SCALE:		N.T.S.	
DWG. BY:		JK	
CHK. BY:		LFS	
DRAWING NO.:		FL-13137.5	
SHEET		8 of 15	
NO.		DATE	
1		10/25/12	
UPDATE TO		2010 FBC	
BY		LFS	
REVISIONS			
Florida Board of Professional Engineers Certificate Of Authorization No. 9813		Lyndon F. Schmidt, P.E. No. 43409	

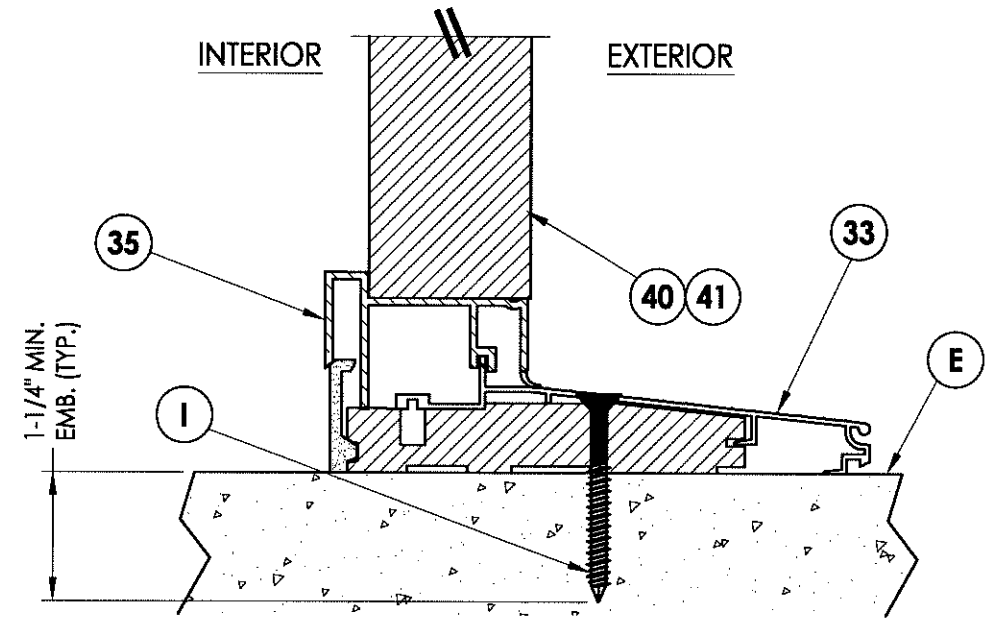
R:\A - Projects\Project Folders\proj 1401-1500\PF 1482\D. RWBC Drawings\FL-13137\FL-13137.dwg, 9.5



1
9 VERTICAL CROSS SECTION



3
9 VERTICAL CROSS SECTION



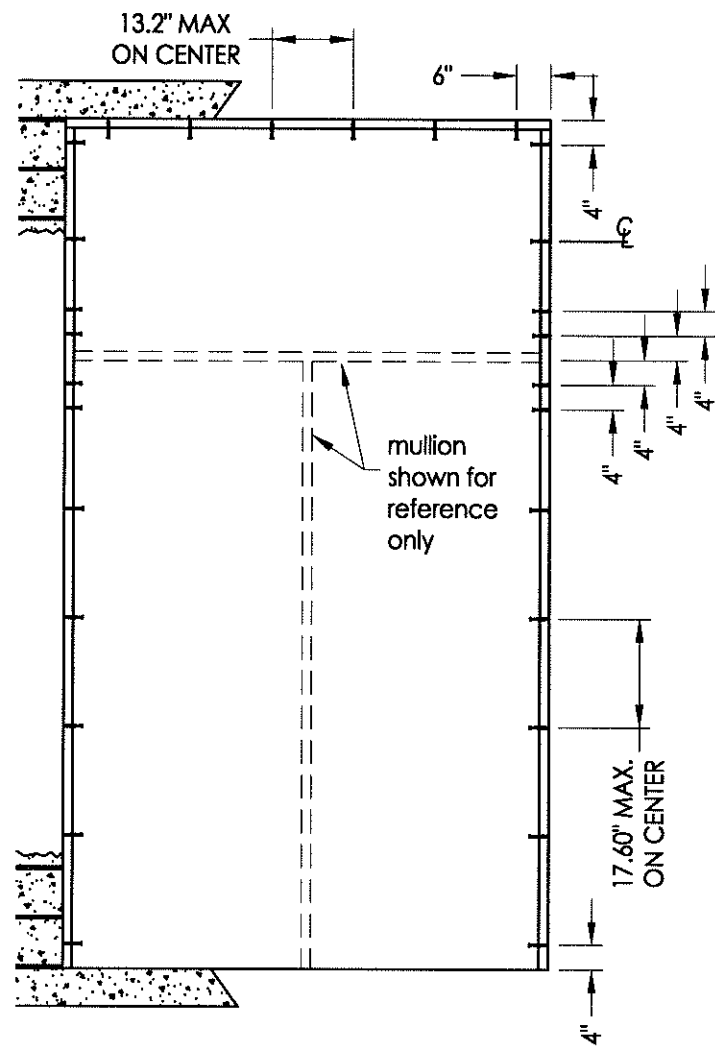
2
9 VERTICAL CROSS SECTION

DATE:	10/06/09
SCALE:	N.T.S.
DWG. BY:	JK
CHK. BY:	LFS
DRAWING NO.:	FL-13137.5
SHEET	9 OF 15

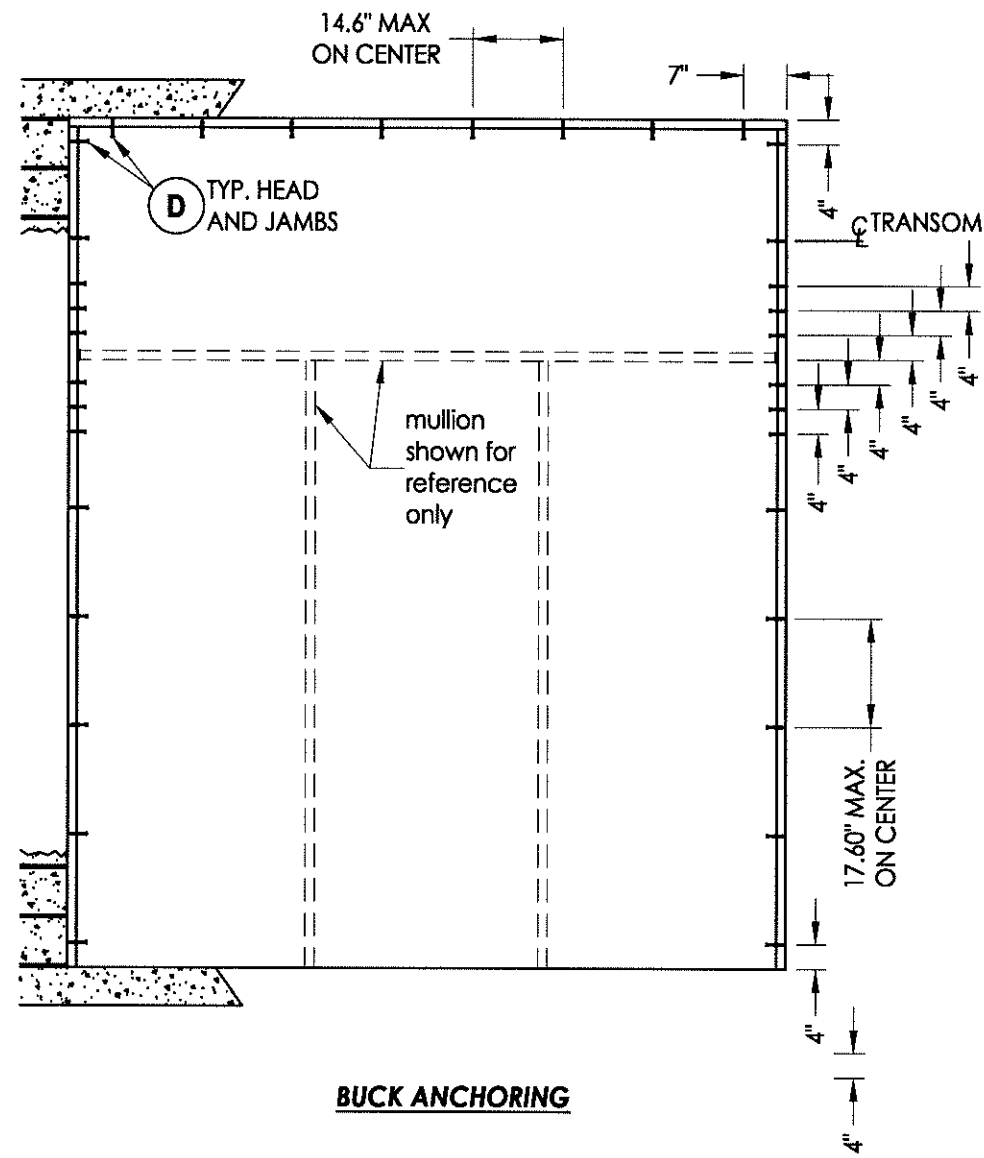
NO.	DATE	BY	REVISIONS
1	10/25/12	LFS	UPDATE TO 2010 FBC

PRODUCT:	ROGUE VALLEY DOOR
PART OR ASSEMBLY:	VERTICAL CROSS SECTIONS

Documents Prepared By:
RW BUILDING CONSULTANTS, INC.
 P.O. Box 230 Valrico FL 33595
 Phone No.: 813.659.9197
 Florida Board of Professional Engineers
 Certificate Of Authorization No. 9813
LFS 10-25-12
 Lyndon F. Schmidt, P.E. No. 43409



BUCK ANCHORING



BUCK ANCHORING

CONCRETE ANCHOR NOTES:

1. Substitution of equal concrete anchors from a different supplier may have different edge distance and center distance requirements.
2. Concrete anchor locations at the corners may be adjusted to maintain the min. edge distance to mortar joints. If concrete anchor locations noted as "MAX. ON CENTER" must be adjusted to maintain the min. edge distance to mortar joints, additional concrete anchors may be required to ensure the "MAX. ON CENTER" dimensions are not exceeded.
3. Concrete anchor table:

ANCHOR TYPE	ANCHOR SIZE	MIN. EMBEDMENT	MIN. CLEARANCE TO MASONRY EDGE	MIN. CLEARANCE TO ADJACENT ANCHOR
ITW	1/4"	1-1/4"	2-1/2"	3"
ELCO	1/4"	1-1/4"	1"	4"

Documents Prepared By:
RW BUILDING CONSULTANTS, INC.
 P.O. Box 230 Volrico FL 33595
 Phone No.: 813.659.9197
 Florida Board of Professional Engineers
 Certificate Of Authorization No. 9813
 Lyndon F. Schmidt, P.E. No. 43409
 10-25-12

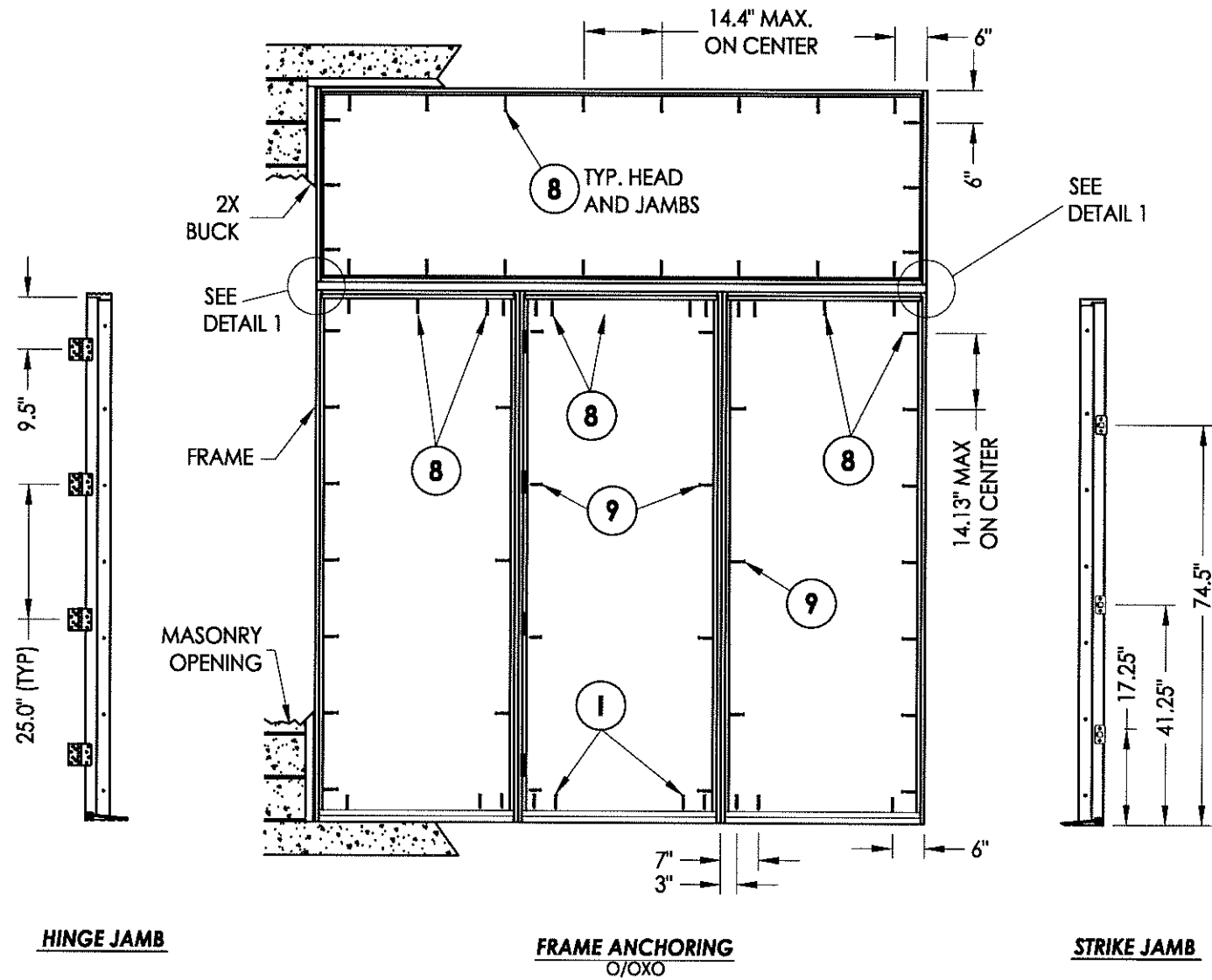
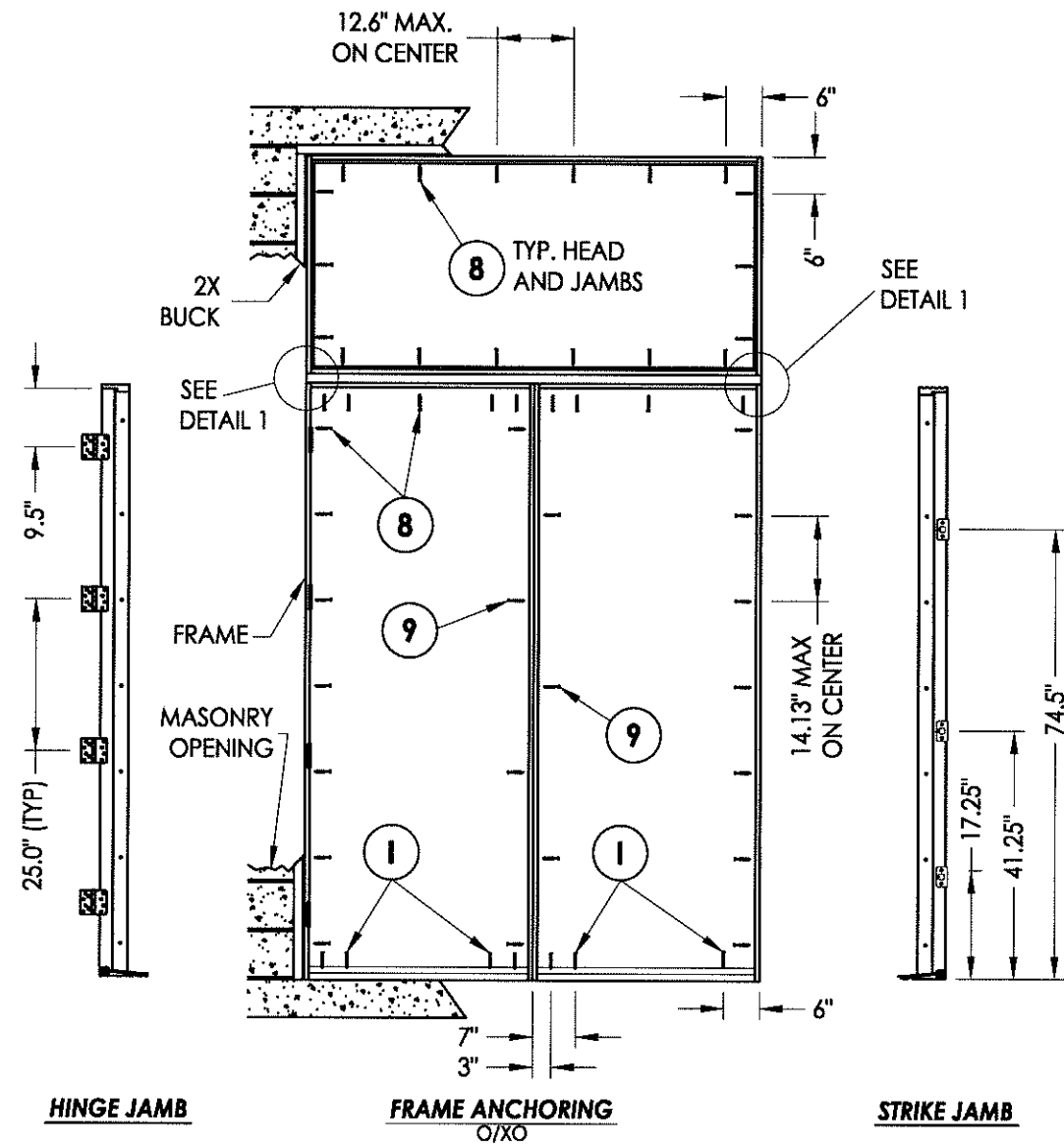
PRODUCT: ROGUE VALLEY DOOR
 PART OR ASSEMBLY: BUCK ANCHORING

NO	DATE	BY
1	10/25/12	LFS
UPDATE TO 2010 FBC		

REVISIONS

DATE: 10/06/09
 SCALE: N.T.S.
 DWG. BY: JK
 CHK. BY: LFS
 DRAWING NO.: FL-13137.5
 SHEET 10 OF 15

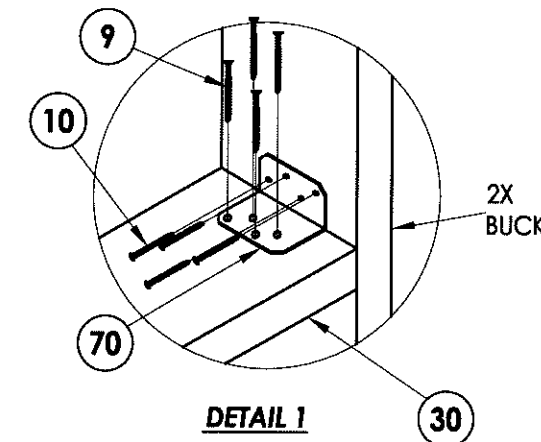
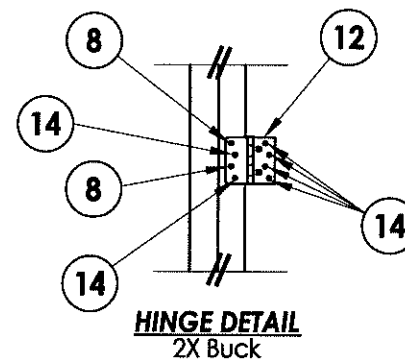
© 2009 R.W. BUILDING CONSULTANTS INC.



CONCRETE ANCHOR NOTES:

1. Substitution of equal concrete anchors from a different supplier may have different edge distance and center distance requirements.
2. Concrete anchor locations at the corners may be adjusted to maintain the min. edge distance to mortar joints. If concrete anchor locations noted as "MAX. ON CENTER" must be adjusted to maintain the min. edge distance to mortar joints, additional concrete anchors may be required to ensure the "MAX. ON CENTER" dimensions are not exceeded.
3. Concrete anchor table:

ANCHOR TYPE	ANCHOR SIZE	MIN. EMBEDMENT	MIN. CLEARANCE TO MASONRY EDGE	MIN. CLEARANCE TO ADJACENT ANCHOR
ITW	1/4"	1-1/4"	2-1/2"	3"
ELCO	1/4"	1-1/4"	1"	4"
ITW	3/16"	1-1/4"	2-5/8"	2-1/4"



Documents Prepared By:
RW BUILDING CONSULTANTS, INC.
 P.O. Box 230 Valrico FL 33595
 Phone No.: 813.659.9197
 Florida Board of Professional Engineers
 Certificate Of Authorization No. 9813
 Lyndon F. Schmidt, P.E. No. 43409

PRODUCT: ROGUE VALLEY DOOR

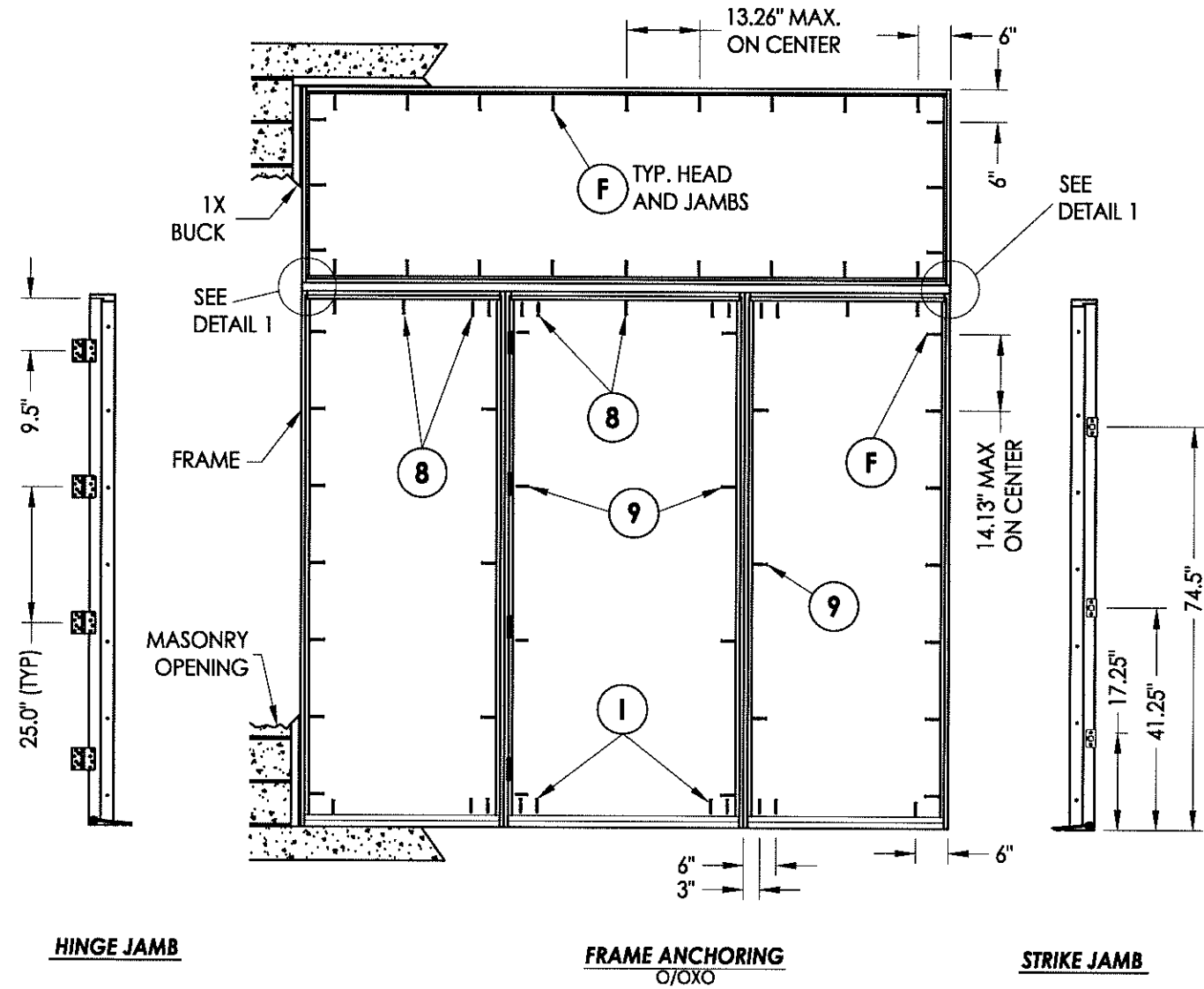
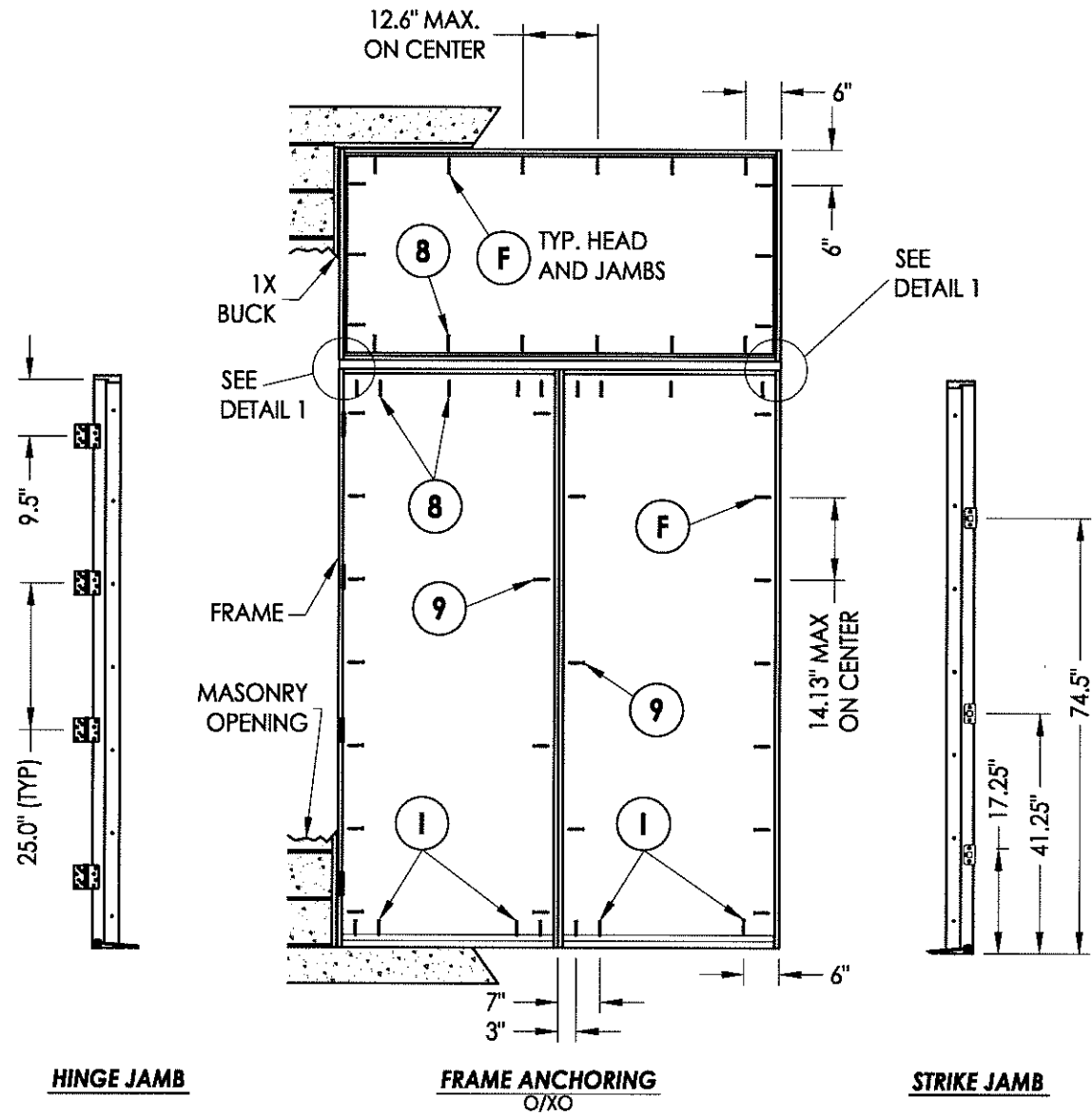
PART OR ASSEMBLY: FRAME ANCHORING 2X BUCK

NO.	DATE	REVISIONS
1	10/25/12	UPDATE TO 2010 FBC
		LFS
		BY

DATE: 10/06/09
 SCALE: N.T.S.
 DWG. BY: JK
 CHK. BY: LFS
 DRAWING NO.: FL-13137.5
 SHEET 11 OF 15

© 2009 R.W. BUILDING CONSULTANTS INC.

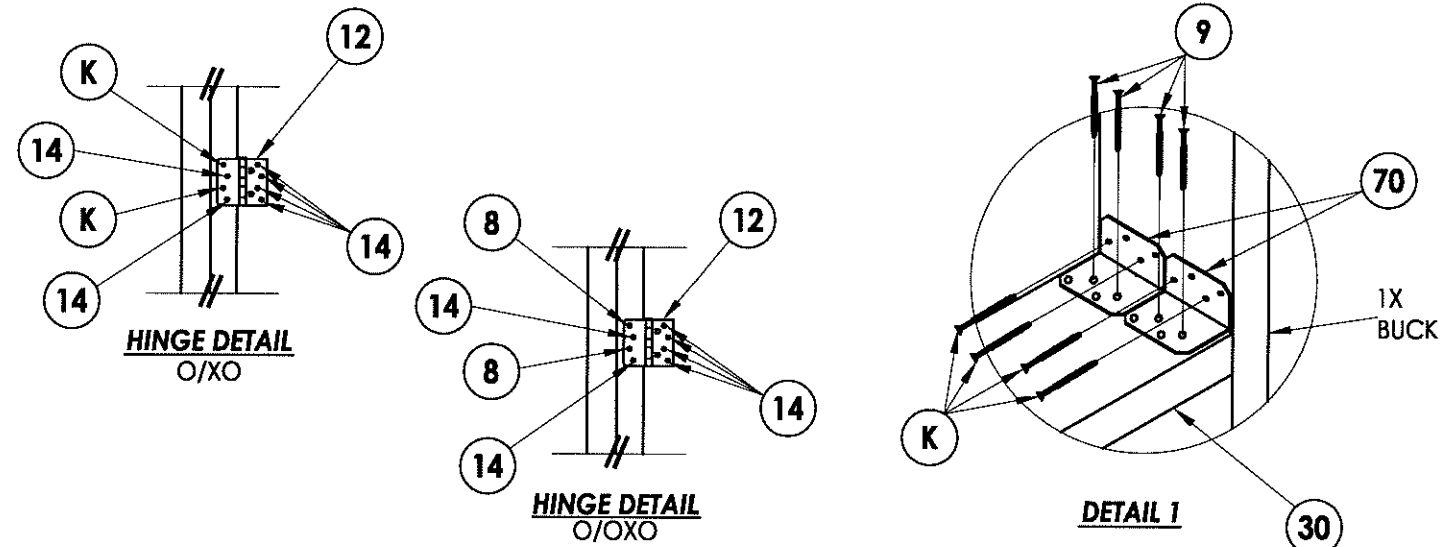
R:\A - Projects\Project Folders\proj_1401-1500\PF_1482\D. RWBC Drawings\FL-13137.dwg, 12.5



CONCRETE ANCHOR NOTES:

1. Substitution of equal concrete anchors from a different supplier may have different edge distance and center distance requirements.
2. Concrete anchor locations at the corners may be adjusted to maintain the min. edge distance to mortar joints. If concrete anchor locations noted as "MAX. ON CENTER" must be adjusted to maintain the min. edge distance to mortar joints, additional concrete anchors may be required to ensure the "MAX. ON CENTER" dimensions are not exceeded.
3. Concrete anchor table:

ANCHOR TYPE	ANCHOR SIZE	MIN. EMBEDMENT	MIN. CLEARANCE TO MASONRY EDGE	MIN. CLEARANCE TO ADJACENT ANCHOR
ITW	1/4"	1-1/4"	2-1/2"	3"
ELCO	1/4"	1-1/4"	1"	4"
ITW	3/16"	1-1/4"	2-5/8"	2-1/4"



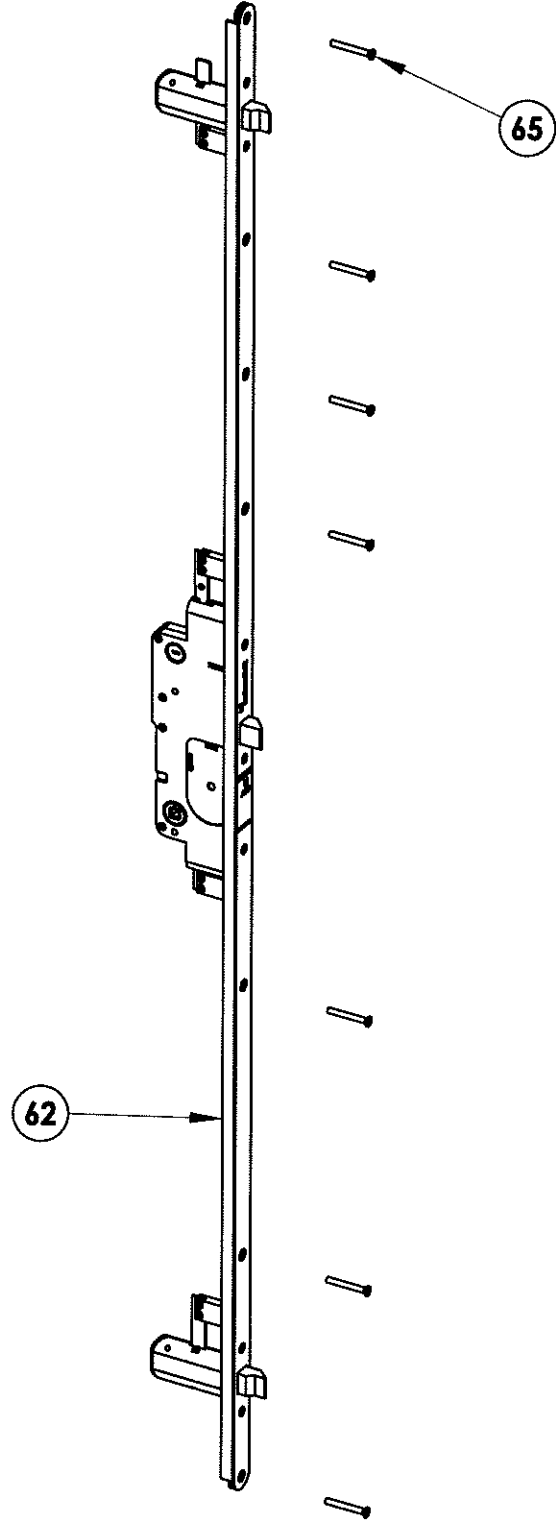
Documents Prepared By: **RW** BUILDING CONSULTANTS, INC.
P.O. Box 230 Vairico FL 33595
Phone No.: 813.659.9197
Florida Board of Professional Engineers
Certificate of Authorization No. 9813
LF 10.25.12
Lyndon F. Schmidt, P.E. No. 43409

PRODUCT: ROGUE VALLEY DOOR
PART OR ASSEMBLY: FRAME ANCHORING 1X BUCK

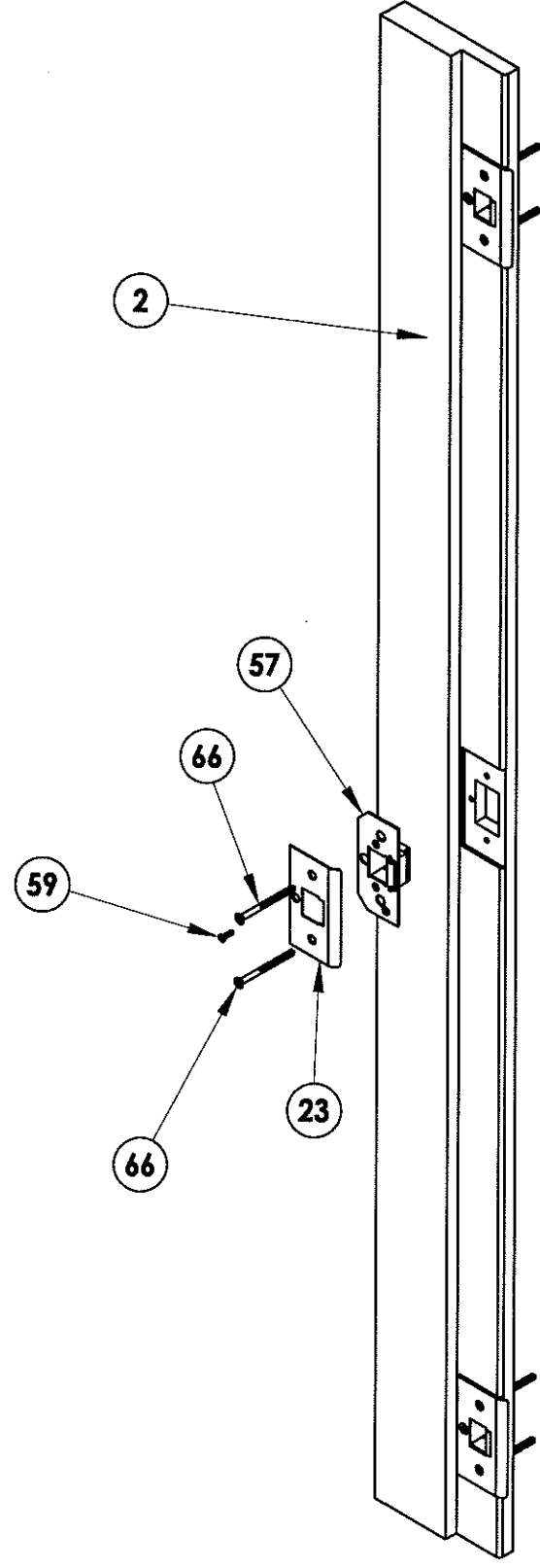
NO.	DATE	BY	REVISIONS
1	10/25/12	LFS	UPDATE TO 2010 FBC

DATE: 10/06/09
SCALE: N.T.S.
DWG. BY: JK
CHK. BY: LFS
DRAWING NO.: FL-13137.5
SHEET 12 OF 15

© 2009 R.W. BUILDING CONSULTANTS INC.



3 POINT LOCK DETAIL
W & F Trilennium



STRIKE DETAIL

DATE: 10/06/09
 SCALE: N.T.S.
 DWG. BY: JK
 CHK. BY: LFS
 DRAWING NO.: FL-13137.5
 SHEET 13 OF 15

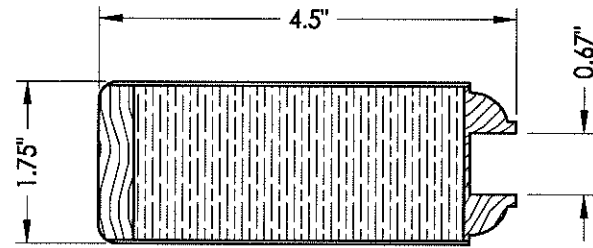
REVISIONS	
NO.	DATE
1	10/25/12
	UPDATE TO 2010 FBC
	LFS
	BY

PRODUCT: ROGUE VALLEY DOOR
 PART OR ASSEMBLY: LOCK DETAILS

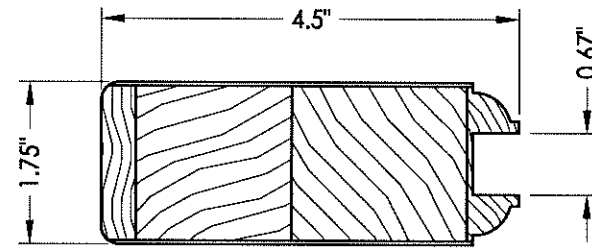
Documents Prepared By:
RW BUILDING CONSULTANTS, INC.
 P.O. Box 230 Valrico FL 33595
 Phone No.: 813.659.9197
 Florida Board of Professional Engineers
 Certificate Of Authorization No. 9913
LFS
 Lyndon F. Schmidt, P.E. No. 43409

NOTE:

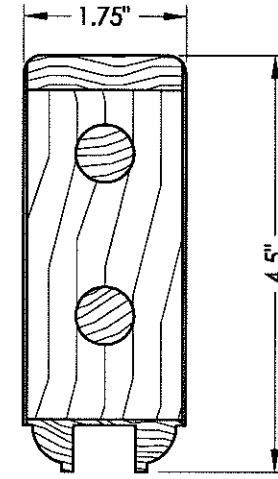
1. Pins are 5/8" x 5" centered half in the rail, half in the stile.
2. Door panel wood SG. >= 0.42



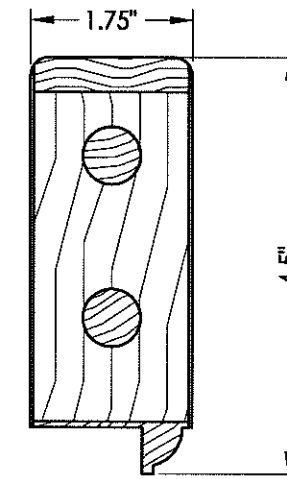
54 HINGE AND LATCH STILE
Panel infill
LVL



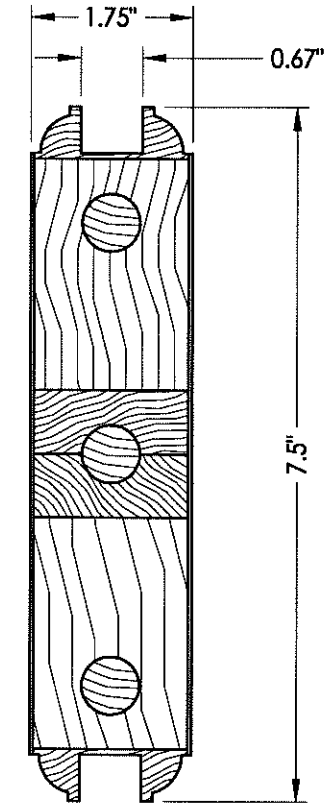
54 HINGE AND LATCH STILE
Panel infill



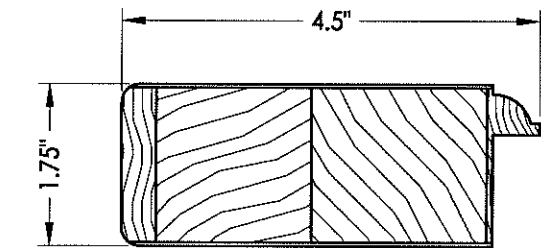
51 TOP RAIL
Panel infill



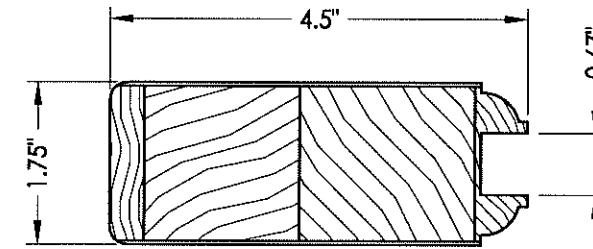
51 TOP RAIL
Glazed



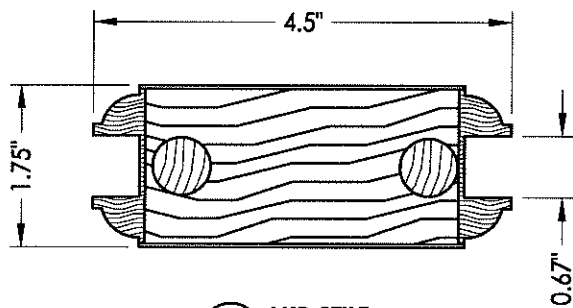
52 LOCK RAIL
Panel infill



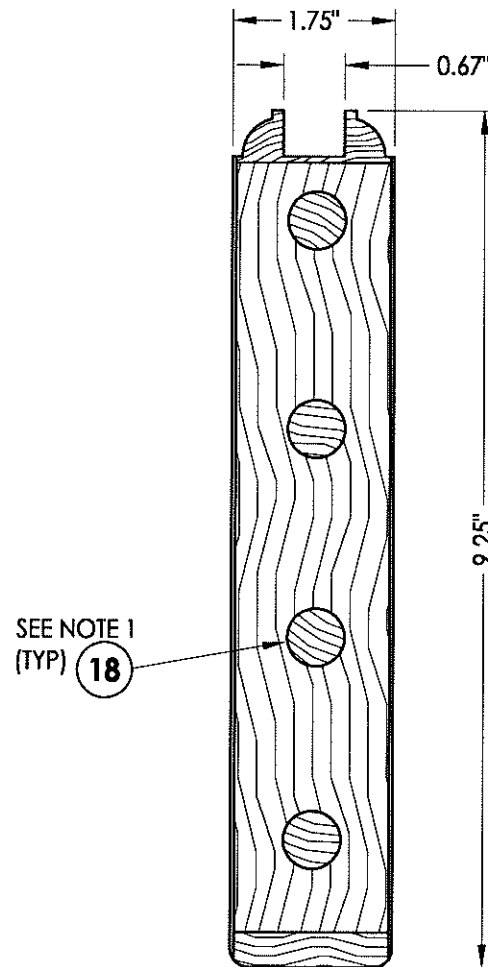
54 HINGE AND LATCH STILE
Glazed



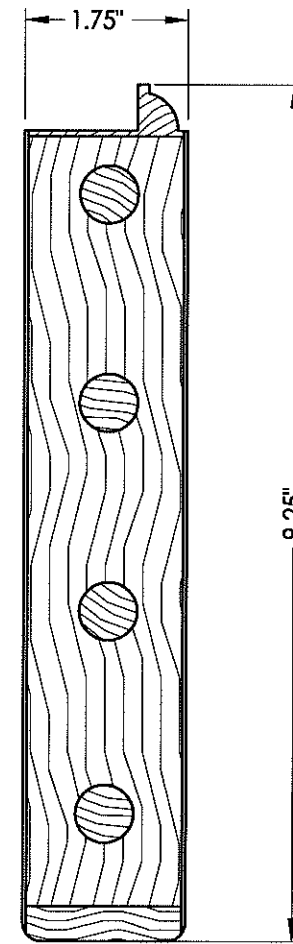
54 HINGE AND LATCH STILE
Panel infill



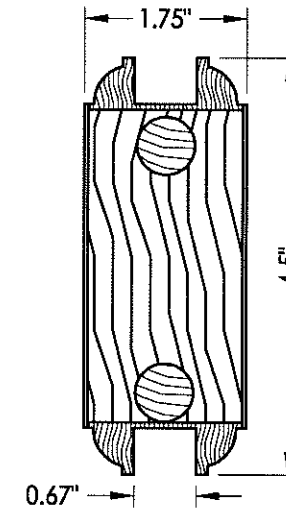
55 MID STILE



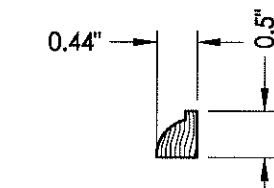
53 BOTTOM RAIL
Panel infill



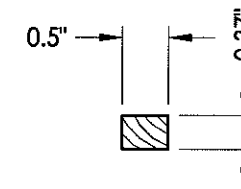
53 BOTTOM RAIL
Glazed



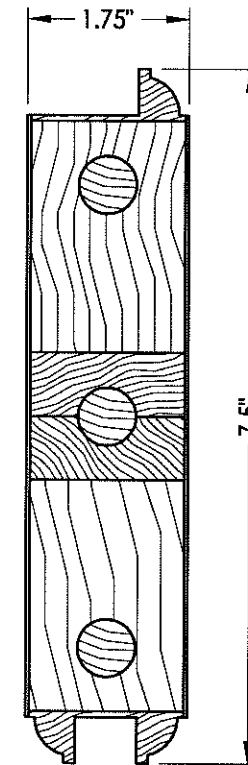
58 MID RAIL
Panel infill



56 GLASS STOP



21 PANEL STOP



52 LOCK RAIL
Glazed

Documents Prepared By:
RW BUILDING CONSULTANTS, INC.
 P.O. Box 230 Valrico FL, 33595
 Phone No.: 813.659.9197
 Florida Board of Professional Engineers
 Certificate of Authorization No. 9813
 Lyndon F. Schmidt, P.E. No. 43409

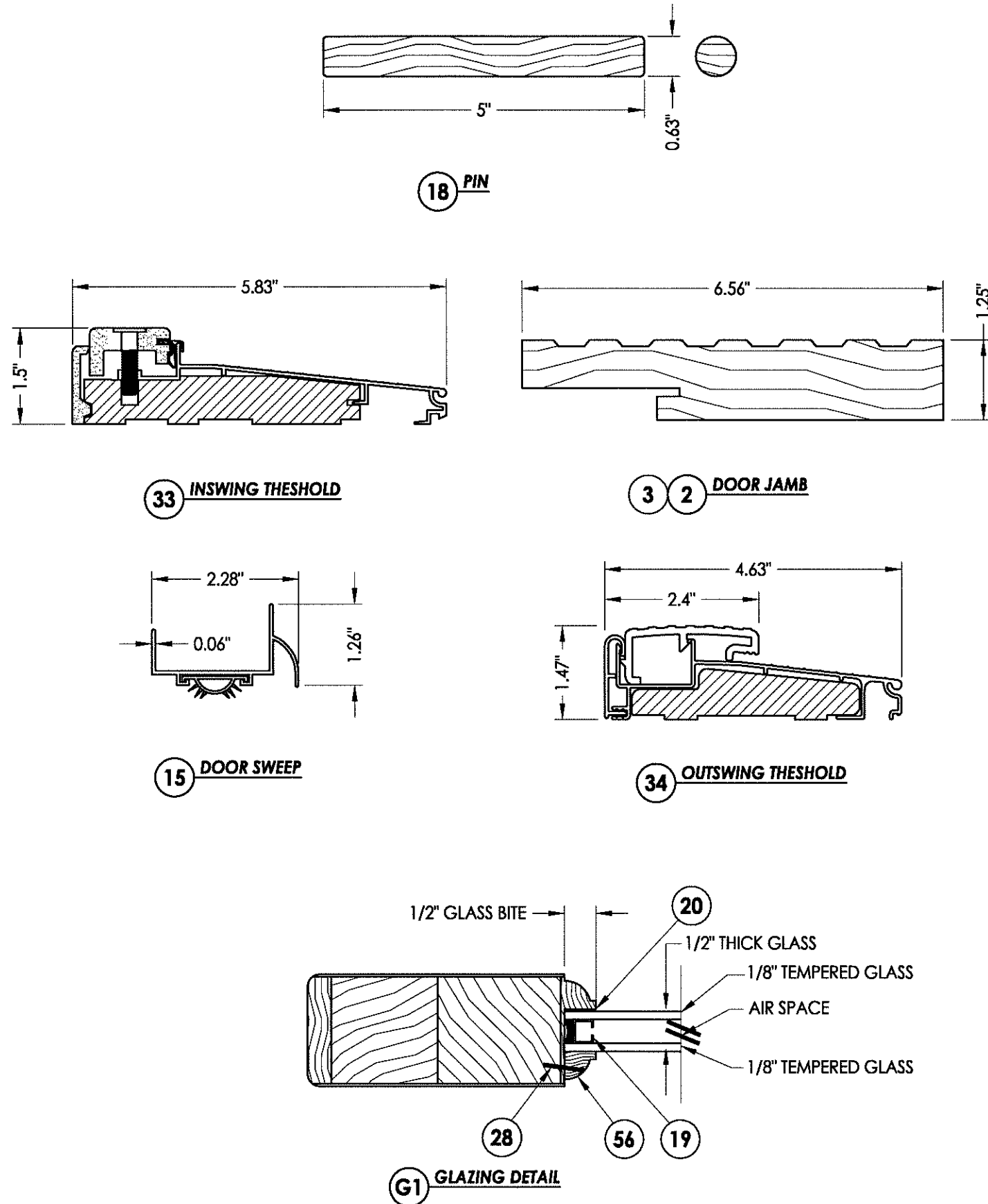
PRODUCT: ROGUE VALLEY DOOR
 PART OR ASSEMBLY: COMPONENTS

NO.	DATE	REVISIONS	BY
1	10/25/12	UPDATE TO 2010 FBC	LFS

DATE: 10/06/09
 SCALE: N.T.S.
 DWG. BY: JK
 CHK. BY: LFS
 DRAWING NO.: FL-13137.5
 SHEET 14 OF 15

© 2009 R.W. BUILDING CONSULTANTS INC.

BILL OF MATERIALS		
ITEM #	DESCRIPTION	MATERIAL
A	1X BUCK SG >= 0.55	WOOD
B	2X BUCK SG >= 0.55	WOOD
C	1/4" MAX. SHIM SPACE	-
D	1/4" X 2-3/4" ELCO OR ITW CONCRETE SCREW	STEEL
E	MASONRY - 3,192 PSI MIN. CONCRETE CONFORMING TO ACI 301 OR HOLLOW BLOCK CONFORMING TO ASTM C90	CONCRETE
F	1/4" X 3-3/4" ELCO OR ITW CONCRETE SCREW	STEEL
I	1/4" X 2-1/4" ELCO OR ITW CONCRETE SCREW	STEEL
K	3/16" X 3-1/4" ITW CONCRETE SCREW	STEEL
2	DOOR HEADER AND JAMB 1-1/4" X 6 - 9/16" (SG => 0.42 PSF)	WOOD
3	SIDELITE HEADER AND JAMB 1-1/4" X 6 - 9/16" (SG => 0.42 PSF)	WOOD
7	WEATHERSTRIP	FOAM
8	#10 X 2-3/4" PFH WS	STEEL
9	#9 X 2" PFH WS	STEEL
10	#10 X 1-1/2" PPH	STEEL
12	HINGE	STEEL
14	1/4" X 3/4" PFH WS	STEEL
15	DOOR SWEEP	ALUM
16	#6 X 1/2" PPH WS	STEEL
17	PANEL INFIL	WOOD/COMP
18	5/8" DIA. X 5" PIN	WOOD
19	.375" GLAZING SPACER	ALUM
20	SEALANT	SILICONE
21	3/8" X 1/2" PANEL STOP	WOOD
22	1" BRAD	STEEL
23	MULTI-POINT STRIKE PLATE	STEEL
28	1/4" X 1" 16GA. STAPLE	STEEL
30	1-1/2" MULLION SG. ≥ 0.55	WOOD
33	THRESHOLD (INSWING)	-
34	THRESHOLD (OUTSWING)	-
35	INSWING SIDELITE ADAPTER	-
36	TRANSOM	-
40	SIDELITE PANEL (3/4 LITE)	-
41	SIDELITE PANEL (FULL LITE)	-
49	DOOR PANEL (GLAZED)	-
50	DOOR PANEL (OPAQUE)	-
51	TOP RAIL	WOOD
52	LOCK RAIL	WOOD
53	BOTTOM RAIL	WOOD
54	HINGE AND LATCH STILE	WOOD
55	MID STILE	WOOD
56	GLASS STOP	WOOD
57	BACKING PLATE	STEEL
58	MID RAIL	WOOD
59	#8 X 3/4" PFH MACHINE SCREW	STEEL
62	LOCK ASSEMBLY 3 POINT LOCK (SINGLE DOOR) W&F Trilennium	STEEL
65	#10 X 1-1/2" PFH WOOD SCREW	STEEL
66	#8 X 1-1/4" PFH MACHINE SCREW	STEEL
70	MULLION CLIP SIMPSON Strong-tie A23Z	STEEL



Documents Prepared By:
RW BUILDING CONSULTANTS, INC.
 P.O. Box 230 Valrico FL 33595
 Phone No.: 813.659.9197
 Florida Board of Professional Engineers
 Certificate of Authorization No. 9813
 Lynden F. Schmitt, P.E. No. 43409

PRODUCT: ROGUE VALLEY DOOR
 PART OR ASSEMBLY: BILL OF MATERIALS, COMPONENTS AND GLAZING DETAIL

NO.	DATE	REVISIONS
1	10/25/12	UPDATE TO 2010 FBC
		LFS
		BY

DATE: 10/06/09
 SCALE: N.T.S.
 DWG. BY: JK
 CHK. BY: LFS
 DRAWING NO.: FL-13137.5
 SHEET 15 OF 15